

College of the Holy Cross

CrossWorks

Desert Pilgrimage Newsletter

Newsletters

9-1-1990

Desert Pilgrimage Newsletter, September 1, 1990

Follow this and additional works at: <https://crossworks.holycross.edu/dca001-dese-az-1984>

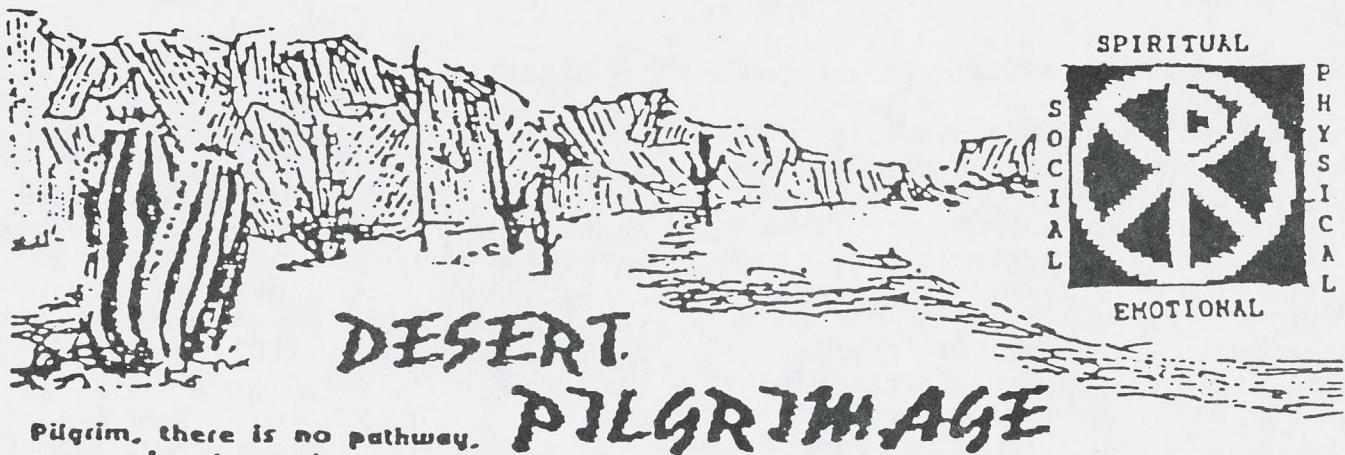


Part of the [Catholic Studies Commons](#), and the [Disability Studies Commons](#)

Repository Citation

"Desert Pilgrimage Newsletter, September 1, 1990" (1990). *Desert Pilgrimage Newsletter*. 27.
<https://crossworks.holycross.edu/dca001-dese-az-1984/27>

This Newsletter is brought to you for free and open access by the Newsletters at CrossWorks. It has been accepted for inclusion in Desert Pilgrimage Newsletter by an authorized administrator of CrossWorks.



**Pilgrim, there is no pathway,
you make the path.**

DESERT PILGRIMAGE

A MONTHLY PUBLICATION BY AND FOR PERSONS WITH DISABILITIES
VOL. 14 NO. 6 SEPTEMBER 1990

DAY OF PRAYER/RENEWAL

Due to budget cuts, the Office of Special Services will not be able to sponsor the Desert Pilgrim Retreat weekend at the Casa this year. We are aware that many of you look forward to this yearly retreat. It was a difficult decision to make.

In place of the weekend, we are offering a day of renewal and prayer during Advent at the Casa for persons with physical disabilities. Sister Terese Sedlock from the Contemplative House of Prayer in Black Canyon City has agreed to spend the day with us.

Mark your calendar! December 8, 1990, at the Franciscan Renewal Center, Piper Hall, 9am-3pm. The cost is \$10.00 per person. Bring a sack lunch. Special Services will provide snacks, dessert and beverages. Share with a friend and let this day be a part of your prayerful waiting for the coming of the Christ Child.

For more information or to register, call Paula at 997-6105. Registration deadline is November 8, 1990.



ADVENT BEGINS THE LITURGICAL YEAR

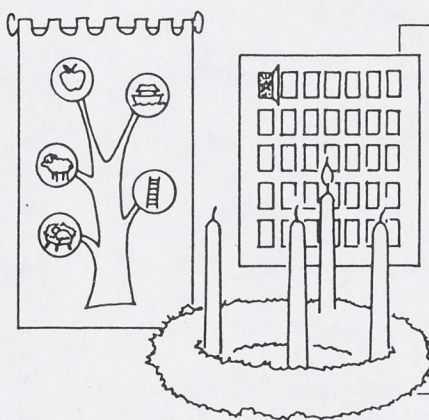
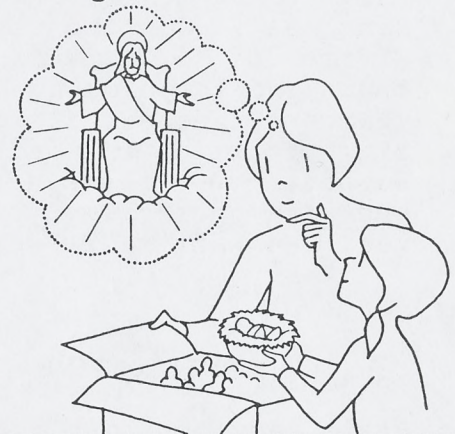
During this season of hope and joy, we:

WAIT IN EXPECTATION

- directing our hearts toward Christ's second coming.

PREPARE OUR HEARTS AND MINDS

for the celebration of the first coming: Jesus' birth at Christmas.



ADVENT CUSTOMS

include the:

- ADVENT WREATH - to symbolize the hope our faith brings
- JESSE TREE - to recall Christ's ancestors and prophets
- ADVENT CALENDAR - to mark our anticipation of Christmas.

WE CELEBRATE THE IMMACULATE CONCEPTION

during Advent. On December 8, we honor Mary and her example of holiness, remembering that she was free from sin from the moment of her conception.



KOB VOLUNTEERS

If you know of someone who would like to be a puppeteer for Kids on the Block, please have them call our office. Our volunteer puppeteers trained 12 new puppeteers for the northern part of the diocese in February. We would like to hold another training session in the Fall. The requests for KOB continue to grow. It would be wonderful to have persons with disabilities participating in this informative, worthwhile program.

SPECIAL RELIGIOUS EDUCATION

RE classes will be starting in mid-September in all of the parishes. This year, the Office of Special Services is working with the Diocesan Office of Religious Education to touch and to encourage the Special RE teachers in their parishes. We are a tiny office, but the staff wants to support the Special RE teachers in every way possible. Let us hear from you. We want to be your advocate.

LEGISLATIVE UPDATE

State services cost money! Your taxes were raised \$260 million last year.

\$22 million to serve chronically mentally ill

\$7.9 million to serve emotionally ill children

\$750,000 more for the homeless

36% AFDC grant increase of the poverty line from \$292 to \$313 for a family of three

The tax bill that passed was progressive. If it should be overturned by the referendum, lower income taxpayers would pay higher taxes, while higher income taxpayers should pay lower taxes. Example: Taxpayers in the \$10-15,000 bracket, now paying \$127 in State taxes, will pay \$175, a 38% increase, if the referendum passes. In the \$200-500,000 bracket, taxes would be reduced by \$2,402, a 16% decrease!

DISABLED AMERICANS GAIN RIGHTS

by Tricia Doyle
(excerpt from St. Anthony Messenger)

A law to extend civil rights protection to 43 million disabled Americans moved through Congress and across President George Bush's desk this summer. The Americans with Disabilities Act (ADA) was signed into law on July 26, 1990.

Referred to as a "Civil Rights Act for the Disabled," the law "is the most significant civil rights legislation to pass the Congress in a quarter of a century," says Rep. Steny Hoyer, chief proponent of the bill. "It opens up opportunities and the pursuit of happiness" to those with physical or mental handicaps. Protection from discrimination is extended to anyone who has a serious disabling condition, including those with AIDS, and alcoholics and drug abusers receiving treatment. The new law requires equality in employment for the disabled and ensures them to access to public services and telecommunications.

Some highlights of the new law are:

- Employers may not discriminate against disabled individuals qualified for a job, either in hiring or firing.

- Employers must provide special services and modifications to allow access for disabled employees.

- Public accommodations (restaurants, hotels, medical offices, theatres, retail stores, public transportation, etc.) may not refuse service to the disabled, must remove existing barriers or provide equitable services, and must make new facilities accessible.

The coming months will tell how well the ADA is enforced, its effect on businesses, and its effect on the public, including those with disabilities.



SSI AND PASS: LETTERS THAT HELP YOU WORK

(Information taken from Pacesetter and PLUK, as well as a workshop on PASS held in Phoenix)

SSI

SSI is a federal program that provides monthly cash payments to persons who have a disability and have little or no income or resources. In order to qualify for SSI, a person must have a physical or mental disability that is expected to last at least 12 months and prevent her or him from engaging in Substantial Gainful Activity. Also, the person's income and resources must not exceed allowable limits. (Payments can begin at birth).

While SSI is administered by the Social Security Administration, a person does not have to have held a job in order to be eligible. Having a job, however, can affect a person's initial eligibility for SSI or the amount of her/his monthly cash payment. This is one reason PASS programs are of interest.

PASS

In the past, one of the problems of persons with disabilities going to work in competitive jobs is that they would lose their SSI benefits. A new program from the Social Security Administration called the Plan to Achieve Self-Support (PASS) corrects this problem by providing incentives for going to work. A PASS permits an individual to set aside income and/or resources to reach a work goal (for example - transportation costs, job coach, vocational training, work related equipment) and excludes that income from being counted when Social Security determines eligibility for SSI. This allows people with disabilities to maintain SSI eligibility and medical benefits under AHCCCS, and can also increase or help maintain their payment amount while they work toward an occupational goal and become self-supporting.

A PASS is established by setting aside one or more of the following: (1) earned income (e.g., wages), (2) unearned income (e.g., SSDI - Social Security Disability Insurance payments), or (3) resources (e.g., a bank account). SSI payments themselves cannot be set aside in a PASS. The individual must have some type of income or resources other than an SSI check to establish a PASS.

A PASS program must be in writing, and must include a realistic work goal, a date for achieving the goal, a clear savings/spending plan, and a method of keeping track of the funds which are set aside. It must be approved by Social Security. It is frequently helpful to initiate a PASS while waiting for supported employment, but a PASS program can be established either before or after a person goes to work. Currently, Social Security allows an initial period of up to 18 months and can allow as many as 48 months in certain cases.

The income or resources that are set aside in a PASS program are not counted by Social Security. A PASS program, therefore, may help a person initially qualify for SSI, or may help her/him receive a greater level of SSI benefits in her/his monthly check. (PASS is an SSI program and has no effect on the SSDI payments a person may be receiving).

PASS programs have traditionally been underutilized. The ability to use PASS to pay for job coaching, however, is a new development. Some other examples of types of expenditures that can be excluded under a PASS include:

- *Tuition, books, supplies, all fees and costs in connection with an educational or occupational training facility.
- *Room and board away from an individual's principal place of residence to attend educational, training, employment, trade, business activities
- *Attendant care
- *Job coach assistance
- *Child care
- *Equipment or tools
- *Uniforms, safety equipment
- *Medical and social services costs
- *Maintenance costs on any of the above
- *Transportation costs (taxes, insurance, mileage, maintenance)
- *Permits and licenses connected with meeting the occupational objective.

Anyone may help an individual write his or her PASS, including a counselor, social worker, parent, employer or a Social Security SSI claims specialist. Materials and a checklist for helping a person develop a PASS are available from Daniel Scarborough, PASS Project Coordinator, ARC National Headquarters, 2501 Ave. J, Arlington, TX 76006 (817) 640-0204

PHOENIX CATHOLIC DEAF CENTER



Office of Special Services
1825 W. Northern Ave.
Phoenix, AZ 85021
997-6105 V



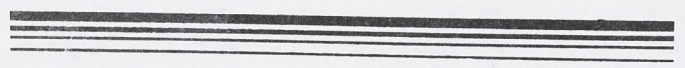
WELCOME BACK! It's time to get going again. I hope all of you had a safe and enjoyable summer, and for those of you who were here in June, "congratulations" on surviving the 122^o.

We are getting together for mass on Sept. 9 at 11:00am, and during our social time will discuss plans for the year. If you have any suggestions or preferences, let us know. If you miss Sept. 9, you can call Bob or Patty Schultz at 203-9615 and let them know.

DEAF MINISTRY TEAM: Bob Schultz - Deaf Pastoral Leader
Patty Schultz - Secretary
Gerard Domack - Treasurer

We are looking forward to seeing all of you again.

Remember, Signed mass at Kino, second Sunday of every month, and interpreted masses every Sunday in many of your own parishes. See the schedule.



Liturgy



MONTHLY SIGNED MASS FOR THE DEAF
Kino Institute
1224 E. Northern Ave.

Sunday, September 9

10:45 Reconciliation (Confession)
11:00 Mass
12:00 Social/Meeting

WEEKLY INTERPRETED MASS SCHEDULE

ST. DANIEL THE PROPHET 1030 N. Hayden Rd. Scottsdale, AZ (Not 2nd Sunday)	9:00AM
ST. GREGORY 3424 N. 18th Ave. Phoenix, AZ	9:00AM
ST. JAMES 19640 N. 35th Ave. Glendale, AZ	9:00AM
ST. JEROME 10815 N. 35th Ave. Phoenix, AZ	7:00PM
ST. LOUIS THE KING 4331 W. Maryland Ave. Glendale, AZ	11:00AM
ST. MARK 400 N. 30th St. Phoenix, AZ	11:00AM
ST. THERESA 5045 E. Thomas Rd. Phoenix, AZ	5:00PM Saturday
ST. TIMOTHY 1730 W. Guadalupe Rd. Mesa, AZ	8:30AM

Religious Education of the Deaf

CATHOLIC RELIGION CLASSES FOR THE DEAF

Religion classes for deaf children will begin again in the fall (October) in various locations throughout the Valley. To register, fill out the form below and send to: Phoenix Catholic Deaf Center, % Office of Special Services, 1825 W. Northern Ave., Phoenix, AZ 85021, or call 997-6105 V.

-----FILL OUT AND RETURN-----

NAME _____ AGE _____
ADDRESS _____
CITY _____ ZIP _____ PHONE _____
PARISH _____
SCHOOL _____
PARENTS _____



VOLUNTEERS NEEDED:

Teach religion to deaf children, starting in October. Must know sign language.

Interpreters for Sunday masses and other Catholic needs. Contact Office of Special Services, 997-6105 V.

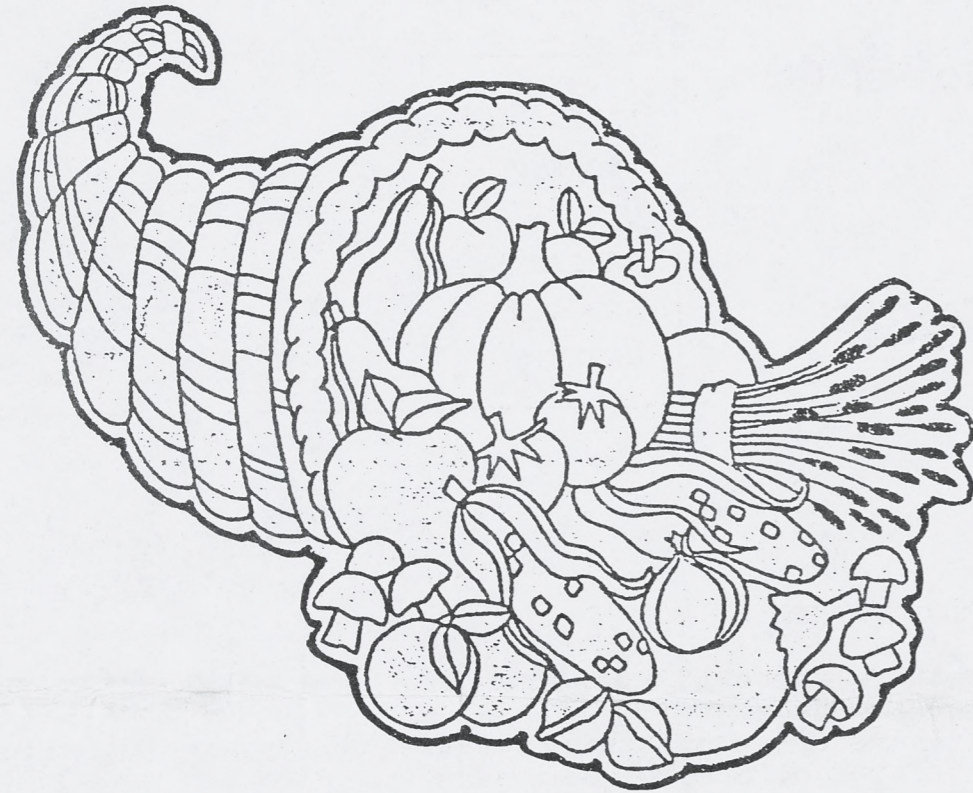
ST. LOUIS THE KING PARISH now has interpreted mass every Sunday. See "Interpreted Mass Schedule."

MISS DEAF ARIZONA, Bridget McCarthy tied for evening gown in one of the preliminary competitions during the Miss Deaf America Pageant in Indianapolis, Indiana. The contest was held in conjunction with the NAD National Convention. Both Bridget and chaperon, Dee Hostetler, had a great time. Many thanks to all of you who helped to make the trip possible and truly an experience to remember.

After the competition, Bridget headed to California for a vacation with her family and then on August 23, headed back to New York and RIT to continue her college education.

When Bridget has a chance to come home, she would like to meet with the people here in Phoenix, especially the young children and teens, and share her experience. She has promised to let us know when that will be.

"HARVEST 1990"



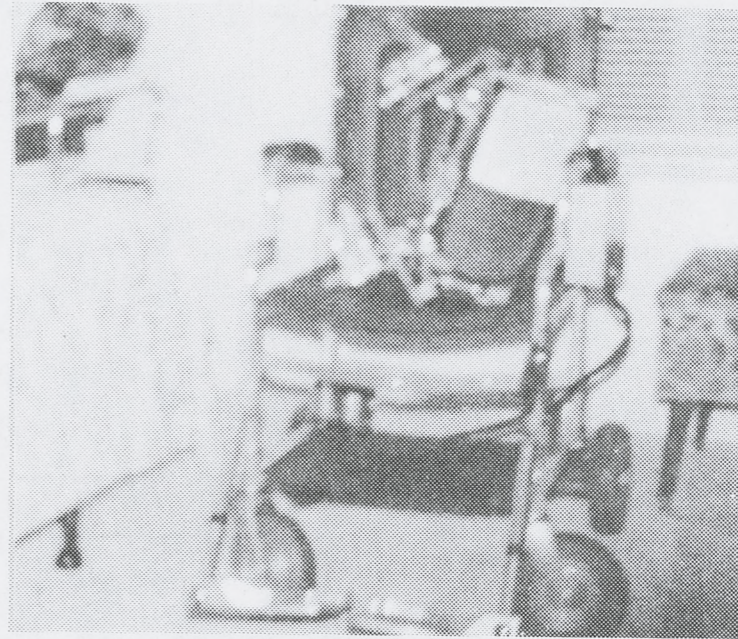
The 13th Annual Harvest Ball will be held on Saturday, November 10, 1990, at Ss. Simon and Jude Parish, 6351 N. 27th Ave. at 7:00pm. Tickets are being mailed out this month. You may also purchase your tickets at the door. Come join us and bring a friend. There will be music, snacks and good company. Come and meet new friends while having fun. Your donation helps the Office of Special Services purchase and repair needed equipment for disabled persons throughout the Valley.



Patron's Corner

FOR SALE

A-BEC Electric Wheelchair with battery charger, fold-away model, extra set of padded leg supports. Like new - only used once. ONLY ASKING \$2,500.00. Call Kirk Jaegle at 892.1865

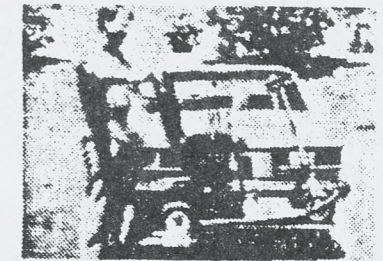


■ The Desert Pilgrimage will be issued in September, January and May this year. If you want something put in the newsletter, please send it in by the 15th of the month preceding the issue date (i.e., by Dec. 15 for Jan. issue). ■

AMIGO MOBILITY™
INDEPENDENCE WITH INDOOR & OUTDOOR MOBILITY
 SERVING THE VALLEY SINCE 1975
TOTAL MOBILITY SYSTEMS
 CUSTOM DESIGNED FOR INDIVIDUAL NEEDS
 8 YEAR LIMITED WARRANTY • MEDICARE & INSURANCE
 • COMPLETE LOCAL SERVICE • FILING ASSISTANCE

PHOENIX/GLENDALE 253-8044 19617 N. 43 Ave.	MESA 890-0878 134 N. DOBSON RD.
---	--

NOW! Transport your scooter on your car without lifting!



- Folds up when not in use
- Fits most 3 wheel scooters
- Fully automatic
- Works on most cars

AMIGO MOBILITY™
 • Serving The Valley Since 1975 •
 East: 134 N. Dobson Rd. Mesa, AZ 85201 (602) 890-0878
 West: 19617 N. 43 Ave. Glendale, AZ 85308 (602) 434-5009

The **DESERT PILGRIMAGE** is published by the Diocesan Office of Special Services for Persons with Disabilities. We welcome your input. Please submit articles and information to us at 1825 West Northern, Phoenix, AZ 85021, or by phone (602) 997-6105.

Sr. Jane Krafft, M.S.B.T. - DIRECTOR
 Dee Hostetler - DEAF MINISTRY
 Paula Longone - SECRETARY

RETURNED NEWSLETTERS COST US 25 cents EACH. IF YOU WISH TO REMAIN ON THE MAILING LIST, PLEASE NOTIFY US OF ANY CHANGE OF ADDRESS.

UPCOMING EVENTS

- September 20th - Special Services Advisory Board Mtg., CFCS
- September 22nd - Desert Pilgrims, St. Gregory's, Gordon Hall
- September 27th - Faith & Light, St. Joseph's, Culinan Center

- October 13th - Acts 3, Christ the King Parish, Mesa
- October 20th - Desert Pilgrims, St. Gregory's, Gordon Hall
- October 22nd - Faith & Light, St. Joseph's, Culinan Center

- November 10th - HARVEST BALL, St. Simon & Jude Parish Hall
- November 10th - Acts 3, Christ the King Parish, Mesa
- November 17th - Desert Pilgrims, St. Gregory's, Gordon Hall
- November 26th - Faith & Light, St. Joseph's, Culinan Center

- December 8th - Day of Prayer in preparation for the coming of the Christ Child, Franciscan Renewal Center - sponsored by Special Services (see page 1)
- December 8th - Acts 3, Christ the King Parish, Mesa
- December 15th - Desert Pilgrims, St. Gregory's, Gordon Hall

For information on times or addresses, call 997-6105.

DIOCESE OF PHOENIX
OFFICE OF SPECIAL SERVICES
1825 W. Northern Ave.
Phoenix, AZ 85021

Non-Profit Org.
U.S. POSTAGE
PAID
Phoenix, AZ
Permit 399

**DESERT
PILGRIMAGE**

ADDRESS CORRECTION REQUESTED

