

1993

College of the Holy Cross Campus Arboretum (2nd ed.)

College of the Holy Cross

Follow this and additional works at: http://crossworks.holycross.edu/campus_arboretum



Part of the [Horticulture Commons](#), [Landscape Architecture Commons](#), and the [Social History Commons](#)

Recommended Citation

College of the Holy Cross, "College of the Holy Cross Campus Arboretum (2nd ed.)" (1993). *College of the Holy Cross Campus Arboretum*. Book 3.

http://crossworks.holycross.edu/campus_arboretum/3

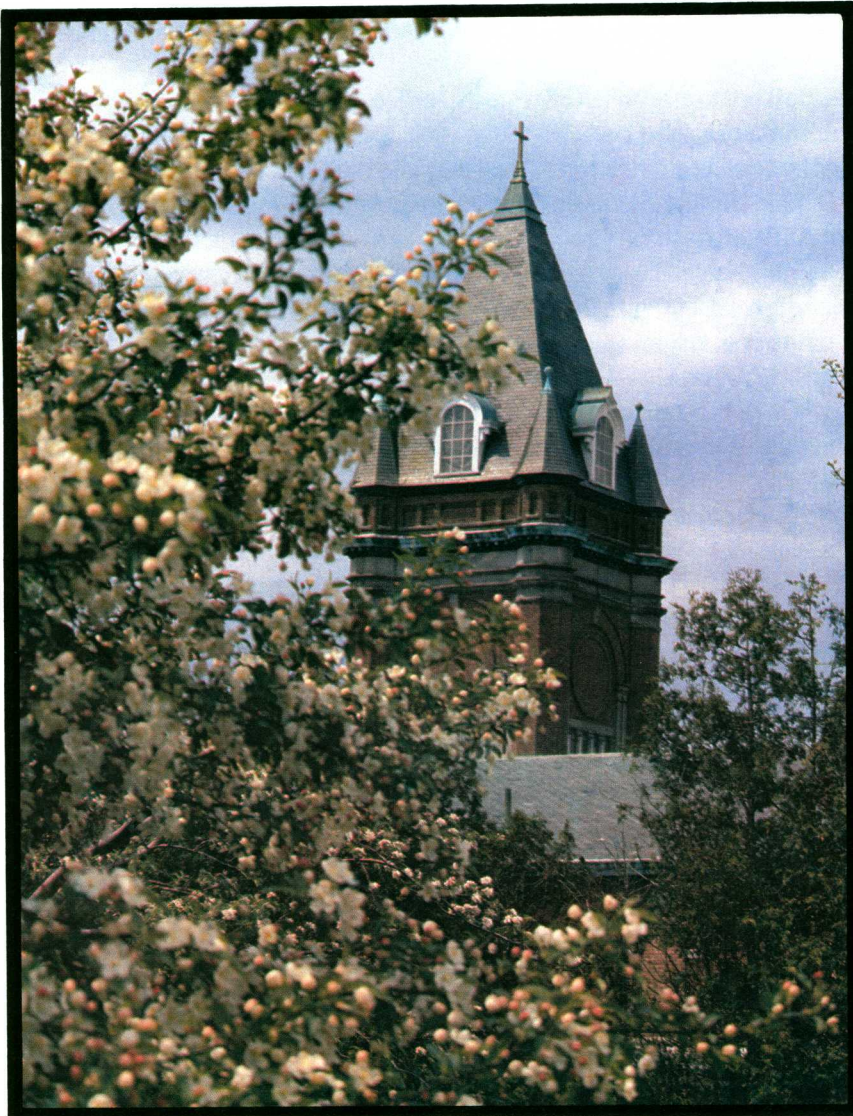
This Book is brought to you for free and open access by the Physical Plant at CrossWorks. It has been accepted for inclusion in College of the Holy Cross Campus Arboretum by an authorized administrator of CrossWorks.

COLLEGE OF THE HOLY CROSS



CAMPUS ARBORETUM

SECOND EDITION



TREES

(For Mrs. Henry Mills Alden)

I think that I shall never see
A poem as lovely as a tree

A tree whose hungry mouth is prest
Against the earth's sweet flowing breast;

A tree that looks at God all day,
And lifts her leafy arms to pray;

A tree that may in summer wear
A nest of robins in her hair;

Upon whos bosom snow has lain;
Who intimately lives with rain.

Poems are made by fools like me,
But only God can make a tree.

Joyce Kilmer

The College of the Holy Cross is the oldest Catholic college in New England. It owes its existence to the second bishop of Boston, Benedict Joseph Fenwick, who founded the College in 1843 and gave it the name of his Cathedral.

From the start, the bishop entrusted the direction of the College to the Fathers of the Society of Jesus (Jesuits). The beginnings were very modest: one wooden building, a half-finished brick structure and 52 acres of land. Today the College is a large educational complex, complete with chapel, library, laboratories and classrooms, residence halls, football stadium, hockey rink, and campus activity center, spread over 175 acres.

Recognition of the College's beautiful landscape has come from many sources. In 1977, the College was cited for having the best maintained school or university grounds in the United States in an award competition co-sponsored by the Professional Grounds Management Society and Grounds Maintenance Magazine. Today, there are over 115 varieties of trees and shrubs on the Holy Cross campus. Its grounds annually attract numerous visitors from central Massachusetts and neighboring states.

This booklet is designed to acquaint visitors with some of the principal features of the Campus Arboretum. The first edition of the Arboretum booklet was made possible through a grant from the Stanley Smith Horticultural Trust of Dunbar, Scotland.

The planting of commemorative trees, as well as trees for shade and beauty, has long been a tradition at Holy Cross. To mention just a few, there is the "Teddy Roosevelt Elm Tree," planted in June of 1905 by Theodore Roosevelt, then President of the United States. The President had come to Holy Cross to address the graduating class and planted the elm tree at the dedicatory exercises of Fitton Field.

Gilbert K. Chesterton, the noted English writer, visited Holy Cross during one of his American lecture tours. To commemorate this visit he planted a cedar tree, amidst much ceremony, during the winter of 1930.

There is an interesting cluster of trees directly in front of Beaven Hall. Here it was a tradition for each graduating class to celebrate a private Arbor Day. Each year a sapling, to which was attached a metal ring designating the class, joined its fellows in this important family.

From 1945 to 1968, three Jesuit priests, Rev. William J. Casey, S.J., Rev. John H. Hutchinson, S.J., and Rev. Thomas A. Shanahan S.J., took three hillside areas and planted literally thousands of evergreens, birches, and flowering crab trees.

Arboretum Information

The Campus Arboretum is open to visitors daily from 9:00 a.m. to 5:00 p.m. throughout the year. Reservations for group tours should be made a week in advance by contacting the Superintendent of Grounds.

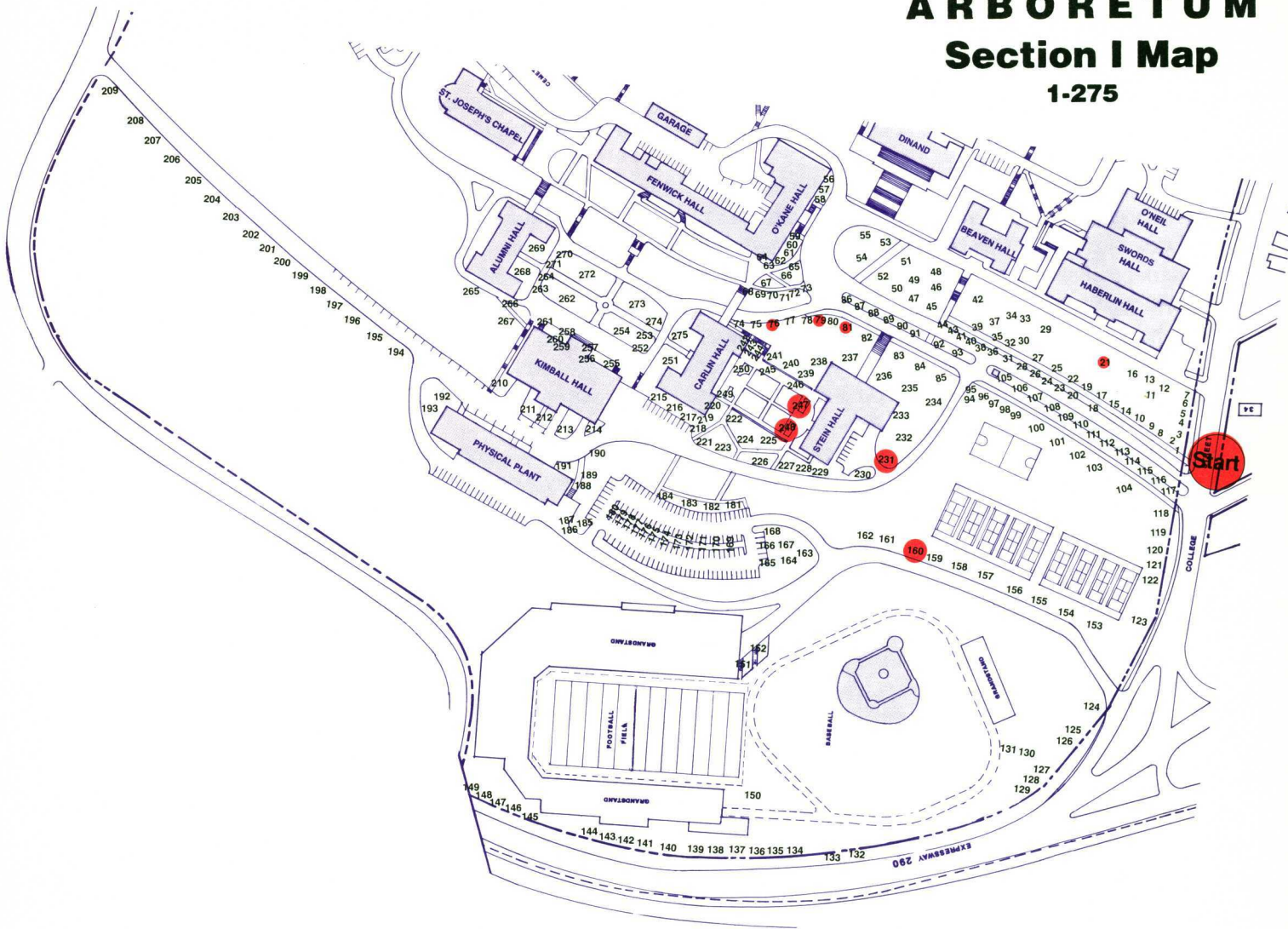
Parking

Visitors' parking areas are clearly indicated on the map in this booklet in Section #1: the Fitton Ave. parking area at the west end of the maintenance building, and in Section #3: the Hogan Campus Center parking area from gate #7 off of College Street. It is suggested that you lock your vehicle as the College will not be responsible for missing or stolen articles. There is no charge for visitor's parking.

Food and Rest Rooms

A cafeteria and rest room facilities are located in the Hogan Campus Center.

College of the Holy Cross ARBORETUM Section I Map 1-275



Commemorative Trees

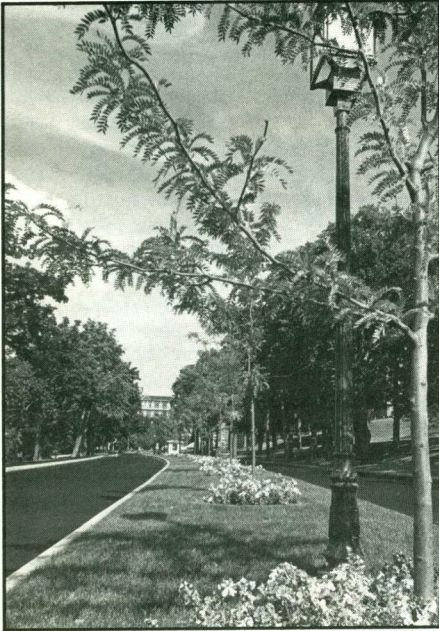
Tree Number	Description	Tree Number	Description
21	Terri Churilla Tree Weeping Cherry (<i>Prunus subhirtella</i> 'Pendula') Location: Linden Lane in front of Haberlin Hall.	160	Teddy Roosevelt Tree Scotch Elm (<i>Ulmus glabra</i>) Location: Northeast corner of lower Tennis Courts. This Scotch Elm was planted by President Theodore Roosevelt in 1905 following commencement exercises.
76	Class of 1924 Tree Small Leaved European Linden (<i>Tilia cordata</i>) Location: Southwest corner of Carlin Dormitory (left hand side of ingoing road from Linden Lane to Quad).	231	George H. Hampsch Tree Bradford Pear Tree (<i>Pyrus Calleryana</i>) Location: Edith Stein Building (west) Dedicated in memory of Professor George H. Hampsch.
79	Class of 1925 Tree Small Leaved European Linden (<i>Tilia cordata</i>) Location: Southwest corner of ingoing road from Linden Lane to Quad (left side of gate).	247	Fr. Dan Millard Tree Norway Maple (<i>Acer platanoides</i>) Location: Edith Stein Building (front, east)
81	Class of 1926 Tree Small Leaved European Linden (<i>Tilia cordata</i>) Location: Linden Lane outgoing road (top of south slope of Edith Stein Building).	248	Robert E. O'Coin Tree Norway Maple (<i>Acer platanoides</i>) Location: Edith Stein Building (front, east) Dedicated in memory of Robert E. O'Coin, Class of 1941.

COLLEGE OF THE HOLY CROSS - ARBORETUM (Section 1 1-275)

BOTANICAL NAME	COMMON NAME	BOTANICAL NAME	COMMON NAME
1 <i>Pinus resinosa</i>	Red Pine	70 <i>Acer platanoides</i>	Norway Maple
2 <i>Pinus resinosa</i>	Red Pine	71 <i>Acer platanoides</i>	Norway Maple
3 <i>Pinus resinosa</i>	Red Pine	72 <i>Acer platanoides</i>	Norway Maple
4 <i>Picea Abies</i>	Norway Spruce	73 <i>Acer platanoides</i>	Norway Maple
5 <i>Picea pungens</i>	Colorado Blue Spruce	74 <i>Acer platanoides</i>	Norway Maple
6 <i>Picea Abies</i>	Norway Spruce	75 <i>Acer platanoides</i>	Norway Maple
7 <i>Picea Abies</i>	Norway Spruce	76 <i>Tilia cordata</i>	Small Leaved European Linden
8 <i>Acer saccharum</i>	Sugar Maple	77 <i>Acer platanoides</i>	Norway Maple
9 <i>Acer platanoides</i>	Norway Maple	78 <i>Acer platanoides</i>	Norway Maple
10 <i>Acer platanoides</i>	Norway Maple	79 <i>Tilia cordata</i>	Small Leaved European Linden
11 <i>Quercus rubra</i>	Red Oak	80 <i>Acer platanoides</i>	Norway Maple
12 <i>Salix babylonica</i>	Weeping Willow	81 <i>Tilia cordata</i>	Small Leaved European Linden
13 <i>Quercus velutina</i>	Black Oak	82 <i>Acer platanoides</i>	Norway Maple
14 <i>Acer saccharum</i>	Sugar Maple	83 <i>Tilia cordata</i>	Small Leaved European Linden
15 <i>Acer platanoides</i>	Norway Maple	84 <i>Acer platanoides</i>	Norway Maple
16 <i>Quercus rubra</i>	Red Oak	85 <i>Tilia cordata</i>	Small Leaved European Linden
17 <i>Quercus rubra</i>	Red Oak	86 <i>Gleditsia triacanthos inermis</i>	Honey Locust
18 <i>Tilia cordata</i>	Small Leaved European Linden	87 <i>Gleditsia triacanthos inermis</i>	Honey Locust
19 <i>Acer platanoides</i>	Norway Maple	88 <i>Gleditsia triacanthos inermis</i>	Honey Locust
20 <i>Tilia cordata</i>	Small Leaved European Linden	89 <i>Gleditsia triacanthos inermis</i>	Honey Locust
21 <i>Prunus subhirtella</i> 'Pendula'	Weeping Cherry	90 <i>Gleditsia triacanthos inermis</i>	Honey Locust
22 <i>Acer saccharum</i>	Sugar Maple	91 <i>Gleditsia triacanthos inermis</i>	Honey Locust
23 <i>Tilia cordata</i>	Small Leaved European Linden	92 <i>Gleditsia triacanthos inermis</i>	Honey Locust
24 <i>Ulmus procera</i>	English Elm	93 <i>Gleditsia triacanthos inermis</i>	Honey Locust
25 <i>Acer saccharum</i>	Sugar Maple	94 <i>Fraxinus americana</i>	White Ash
26 <i>Fraxinus americana</i>	White Ash	95 <i>Acer saccharum</i>	Sugar Maple
27 <i>Aesculus Hippocastanum</i>	Horse Chestnut	96 <i>Tilia cordata</i>	Small Leaved European Linden
28 <i>Tilia cordata</i>	Small Leaved European Linden	97 <i>Acer platanoides</i>	Norway Maple
29 <i>Ginkgo biloba</i>	Maidenhair Tree	98 <i>Acer platanoides</i>	Norway Maple
30 <i>Larix laricina</i>	American Larch	99 <i>Tilia cordata</i>	Small Leaved European Linden
31 <i>Aesculus Hippocastanum</i>	Horse Chestnut	100 <i>Tilia cordata</i>	Small Leaved European Linden
32 <i>Acer saccharum</i>	Sugar Maple	101 <i>Acer platanoides</i>	Norway Maple
33 <i>Sorbus Aucuparia</i>	European Mountain Ash	102 <i>Acer platanoides</i>	Norway Maple
34 <i>Salix babylonica</i>	Weeping Willow	103 <i>Tilia cordata</i>	Small Leaved European Linden
35 <i>Acer saccharum</i>	Sugar Maple	104 <i>Acer platanoides</i>	Norway Maple
36 <i>Fraxinus americana</i>	White Ash	105 <i>Gleditsia triacanthos inermis</i>	Honey Locust
37 <i>Fagus sylvatica</i> 'Atropunicea'	European Purple Beech	106 <i>Gleditsia triacanthos inermis</i>	Honey Locust
38 <i>Fraxinus americana</i>	White Ash	107 <i>Gleditsia triacanthos inermis</i>	Honey Locust
39 <i>Acer saccharum</i>	Sugar Maple	108 <i>Gleditsia triacanthos inermis</i>	Honey Locust
40 <i>Tilia cordata</i>	Small Leaved European Linden	109 <i>Gleditsia triacanthos inermis</i>	Honey Locust
41 <i>Acer saccharum</i>	Sugar Maple	110 <i>Gleditsia triacanthos inermis</i>	Honey Locust
42 <i>Malus floribunda</i>	Flowering Crabapple	111 <i>Gleditsia triacanthos inermis</i>	Honey Locust
43 <i>Acer saccharum</i>	Sugar Maple	112 <i>Gleditsia triacanthos inermis</i>	Honey Locust
44 <i>Tilia cordata</i>	Small Leaved European Linden	113 <i>Gleditsia triacanthos inermis</i>	Honey Locust
45 <i>Acer saccharum</i>	Sugar Maple	114 <i>Gleditsia triacanthos inermis</i>	Honey Locust
46 <i>Fraxinus americana</i>	White Ash	115 <i>Gleditsia triacanthos inermis</i>	Honey Locust
47 <i>Tilia cordata</i>	Small Leaved European Linden	116 <i>Gleditsia triacanthos inermis</i>	Honey Locust
48 <i>Fraxinus americana</i>	White Ash	117 <i>Gleditsia triacanthos inermis</i>	Honey Locust
49 <i>Acer saccharum</i>	Sugar Maple	118 <i>Tilia cordata</i>	Small Leaved European Linden
50 <i>Ulmus procera</i>	English Elm	119 <i>Tilia cordata</i>	Small Leaved European Linden
51 <i>Acer palmatum</i>	Japanese Maple	120 <i>Tilia cordata</i>	Small Leaved European Linden
52 <i>Fraxinus americana</i>	White Ash	121 <i>Tilia cordata</i>	Small Leaved European Linden
53 <i>Quercus rubra</i>	Red Oak	122 <i>Fraxinus americana</i>	White Ash
54 <i>Ginkgo biloba</i>	Maidenhair Tree	123 <i>Acer saccharum</i>	Sugar Maple
55 <i>Acer platanoides</i> 'Schwedleri'	Schwedler Maple	124 <i>Acer saccharum</i>	Sugar Maple
56 <i>Picea pungens</i>	Colorado Blue Spruce	125 <i>Fraxinus americana</i>	White Ash
57 <i>Picea pungens</i>	Colorado Blue Spruce	126 <i>Acer rubrum</i>	Red Maple
58 <i>Picea pungens</i>	Colorado Blue Spruce	127 <i>Acer rubrum</i>	Red Maple
59 <i>Picea Abies</i>	Norway Spruce	128 <i>Acer rubrum</i>	Red Maple
60 <i>Picea Abies</i>	Norway Spruce	129 <i>Acer rubrum</i>	Red Maple
61 <i>Picea Abies</i>	Norway Spruce	130 <i>Acer platanoides</i>	Norway Maple
62 <i>Picea Abies</i>	Norway Spruce	131 <i>Malus floribunda</i>	Flowering Crabapple
63 <i>Abies concolor</i>	White fir	132 <i>Acer platanoides</i>	Norway Maple
64 <i>Sciadopitys verticillata</i>	Japanese Umbrella Pine	133 <i>Acer platanoides</i>	Norway Maple
65 <i>Acer campestre</i>	Hedge Maple	134 <i>Acer platanoides</i>	Norway Maple
66 <i>Evodia Daniellii</i>	Evodia	135 <i>Acer platanoides</i>	Norway Maple
67 <i>Picea pungens</i>	Colorado Blue Spruce	136 <i>Acer platanoides</i>	Norway Maple
68 <i>Acer platanoides</i>	Norway Maple	137 <i>Acer platanoides</i>	Norway Maple
69 <i>Acer platanoides</i>	Norway Maple	138 <i>Acer platanoides</i>	Norway Maple

	BOTANICAL NAME	COMMON NAME		BOTANICAL NAME	COMMON NAME
139	<i>Acer platanoides</i>	Norway Maple	210	<i>Acer platanoides</i>	Norway Maple
140	<i>Acer platanoides</i>	Norway Maple	211	<i>Cornus Kousa</i>	Kousa Dogwood
141	<i>Acer platanoides</i>	Norway Maple	212	<i>Cornus Kousa</i>	Kousa Dogwood
142	<i>Acer platanoides</i>	Norway Maple	213	<i>Acer rubrum</i>	Red Maple
143	<i>Prunus virginiana</i>	Chokecherry	214	<i>Cornus Kousa</i>	Kousa Dogwood
144	<i>Prunus virginiana</i>	Chokecherry	215	<i>Cornus Kousa</i>	Kousa Dogwood
145	<i>Quercus rubra</i>	Red Oak	216	<i>Cornus Kousa</i>	Kousa Dogwood
146	<i>Acer platanoides</i>	Norway Maple	217	<i>Cornus Kousa</i>	Kousa Dogwood
147	<i>Quercus velutina</i>	Black Oak	218	<i>Tilia cordata</i>	Small Leaved European Linden
148	<i>Acer platanoides</i>	Norway Maple	219	<i>Tilia cordata</i>	Small Leaved European Linden
149	<i>Acer platanoides</i>	Norway Maple	220	<i>Tilia cordata</i>	Small Leaved European Linden
150	<i>Prunus Sargentii</i>	Sargents Cherry	221	<i>Gleditsia triacanthos inermis</i>	Honey Locust
151	<i>Malus floribunda</i>	Flowering Crabapple	222	<i>Gleditsia triacanthos inermis</i>	Honey Locust
152	<i>Malus floribunda</i>	Flowering Crabapple	223	<i>Gleditsia triacanthos inermis</i>	Honey Locust
153	<i>Tilia cordata</i>	Small Leaved European Linden	224	<i>Gleditsia triacanthos inermis</i>	Honey Locust
154	<i>Tilia cordata</i>	Small Leaved European Linden	225	<i>Gleditsia triacanthos inermis</i>	Honey Locust
155	<i>Tilia cordata</i>	Small Leaved European Linden	226	<i>Gleditsia triacanthos inermis</i>	Honey Locust
156	<i>Tilia cordata</i>	Small Leaved European Linden	227	<i>Tilia cordata</i>	Small Leaved European Linden
157	<i>Tilia cordata</i>	Small Leaved European Linden	228	<i>Tilia cordata</i>	Small Leaved European Linden
158	<i>Tilia cordata</i>	Small Leaved European Linden	229	<i>Tilia cordata</i>	Small Leaved European Linden
159	<i>Tilia cordata</i>	Small Leaved European Linden	230	<i>Acer platanoides</i>	Norway Maple
160	<i>Ulmus glabra</i>	Scotch Elm	231	<i>Pyrus Calleryana</i>	Bradford Pear
161	<i>Tilia cordata</i>	Small Leaved European Linden	232	<i>Betula pendula</i>	European White Birch
162	<i>Tilia cordata</i>	Small Leaved European Linden	233	<i>Betula pendula</i>	European White Birch
163	<i>Acer saccharum</i>	Sugar Maple	234	<i>Pinus sylvestris</i>	Scotch Pine
164	<i>Acer rubrum</i>	Red Maple	235	<i>Pinus strobus</i>	White Pine
165	<i>Pinus strobus</i>	White Pine	236	<i>Pinus strobus</i>	White Pine
166	<i>Acer platanoides</i>	Norway Maple	237	<i>Pinus nigra</i>	Austrian Pine
167	<i>Acer platanoides</i>	Norway Maple	238	<i>Betula pendula</i>	European White Birch
168	<i>Acer platanoides</i>	Norway Maple	239	<i>Betula pendula</i>	European White Birch
169	<i>Prunus serrulata</i> 'Kwanzan'	Kwanzan Cherry	240	<i>Betula pendula</i>	European White Birch
170	<i>Prunus serrulata</i> 'Kwanzan'	Kwanzan Cherry	241	<i>Betula pendula</i>	European White Birch
171	<i>Prunus serrulata</i> 'Kwanzan'	Kwanzan Cherry	242	<i>Betula pyramidalis</i>	White Birch
172	<i>Prunus serrulata</i> 'Kwanzan'	Kwanzan Cherry	243	<i>Betula pyramidalis</i>	White Birch
173	<i>Prunus serrulata</i> 'Kwanzan'	Kwanzan Cherry	244	<i>Betula pyramidalis</i>	White Birch
174	<i>Prunus serrulata</i> 'Kwanzan'	Kwanzan Cherry	245	<i>Malus floribunda</i>	Flowering Crabapple
175	<i>Prunus serrulata</i> 'Kwanzan'	Kwanzan Cherry	246	<i>Malus floribunda</i>	Flowering Crabapple
176	<i>Prunus serrulata</i> 'Kwanzan'	Kwanzan Cherry	247	<i>Acer platanoides</i>	Norway Maple
177	<i>Prunus serrulata</i> 'Kwanzan'	Kwanzan Cherry	248	<i>Acer platanoides</i>	Norway Maple
178	<i>Prunus serrulata</i> 'Kwanzan'	Kwanzan Cherry	249	<i>Malus floribunda</i>	Flowering Crabapple
179	<i>Prunus serrulata</i> 'Kwanzan'	Kwanzan Cherry	250	<i>Malus floribunda</i>	Flowering Crabapple
180	<i>Prunus serrulata</i> 'Kwanzan'	Kwanzan Cherry	251	<i>Picea pungens</i>	Colorado Blue Spruce
181	<i>Malus floribunda</i>	Flowering Crabapple	252	<i>Acer platanoides</i>	Norway Maple
182	<i>Malus floribunda</i>	Flowering Crabapple	253	<i>Acer platanoides</i>	Norway Maple
183	<i>Malus floribunda</i>	Flowering Crabapple	254	<i>Acer platanoides</i> cv. 'Schwedleri Nigrum'	Crimson King Maple
184	<i>Malus floribunda</i>	Flowering Crabapple	255	<i>Pseudotsuga Menziesii</i>	Douglas Fir
185	<i>Pinus strobus</i>	White Pine	256	<i>Magnolia X Soulangeana</i>	Saucer Magnolia
186	<i>Pinus strobus</i>	White Pine	257	<i>Cornus Kousa</i>	Kousa Dogwood
187	<i>Pinus strobus</i>	White Pine	258	<i>Cornus Kousa</i>	Kousa Dogwood
188	<i>Magnolia acuminata</i>	Cucumber Magnolia	259	<i>Magnolia X Soulangeana</i>	Saucer Magnolia
189	<i>Cornus Kousa</i>	Kousa Dogwood	260	<i>Magnolia X Soulangeana</i>	Saucer Magnolia
190	<i>Quercus velutina</i>	Black Oak	261	<i>Pseudotsuga Menziesii</i>	Douglas Fir
191	<i>Sorbus Aucuparia</i>	European Mountain Ash	262	<i>Acer platanoides</i> 'Schwedleri Nigrum'	Crimson King Maple
192	<i>Betula pendula</i>	European White Birch	263	<i>Acer platanoides</i>	Norway Maple
193	<i>Picea glauca</i>	White Spruce	264	<i>Acer platanoides</i>	Norway Maple
194	<i>Acer platanoides</i>	Norway Maple	265	<i>Acer platanoides</i>	Norway Maple
195	<i>Acer platanoides</i>	Norway Maple	266	<i>Acer platanoides</i>	Norway Maple
196	<i>Acer platanoides</i>	Norway Maple	267	<i>Fraxinus americana</i>	White Ash
197	<i>Acer platanoides</i>	Norway Maple	268	<i>Sorbus Aucuparia</i>	European Mountain Ash
198	<i>Acer platanoides</i>	Norway Maple	269	<i>Sorbus Aucuparia</i>	European Mountain Ash
199	<i>Acer platanoides</i>	Norway Maple	270	<i>Acer platanoides</i>	Norway Maple
200	<i>Acer platanoides</i>	Norway Maple	271	<i>Acer platanoides</i>	Norway Maple
201	<i>Acer platanoides</i>	Norway Maple	272	<i>Acer platanoides</i> 'Schwedleri Nigrum'	Crimson King Maple
202	<i>Acer platanoides</i>	Norway Maple	273	<i>Acer platanoides</i> 'Schwedleri Nigrum'	Crimson King Maple
203	<i>Acer platanoides</i>	Norway Maple	274	<i>Acer platanoides</i>	Norway Maple
204	<i>Acer platanoides</i>	Norway Maple	275	<i>Picea pungens</i>	Colorado Blue Spruce
205	<i>Acer platanoides</i>	Norway Maple			
206	<i>Acer platanoides</i>	Norway Maple			
207	<i>Acer platanoides</i>	Norway Maple			
208	<i>Acer platanoides</i>	Norway Maple			
209	<i>Acer platanoides</i>	Norway Maple			

LINDEN LANE TREE RENOVATION



Most of the plantings throughout the campus are New England traditional in design. There are over 2,000 trees on the campus and over 115 varieties of trees and shrubs.

We do our own landscape designing of new projects and renovations, including the 1981 renovation of Linden Lane, the main entrance to the college campus. Linden Lane is divided by a median strip. The trees along the strip had been in decline since 1922, when major excavations began to take place around them. Originally, fifteen trees grew alongside a cinder walk which was then replaced by a cement walk. To accomplish this change a trench had to be cut, removing soil and roots from the north side of these trees. Gravel was laid down and compacted and the trench was covered with a nine-inch layer of cement. In 1933 Linden Lane was paved with black top requiring more excavation and resulting in more damage to roots and loss of soil on the south side of the trees. In 1958 a parallel road was put in, creating the median strip and putting the trees under more stress. Measures were taken during these years to save the trees, but pruning, fertilizing, cabling and spraying were of no avail; the trees continued to decline. By 1981 only six dead or dying trees remained. It was decided to replace them and at the same time to improve the appearance of the College's main entrance.

To accomplish this beautification project and to assure the future of the new trees, the following steps were taken:

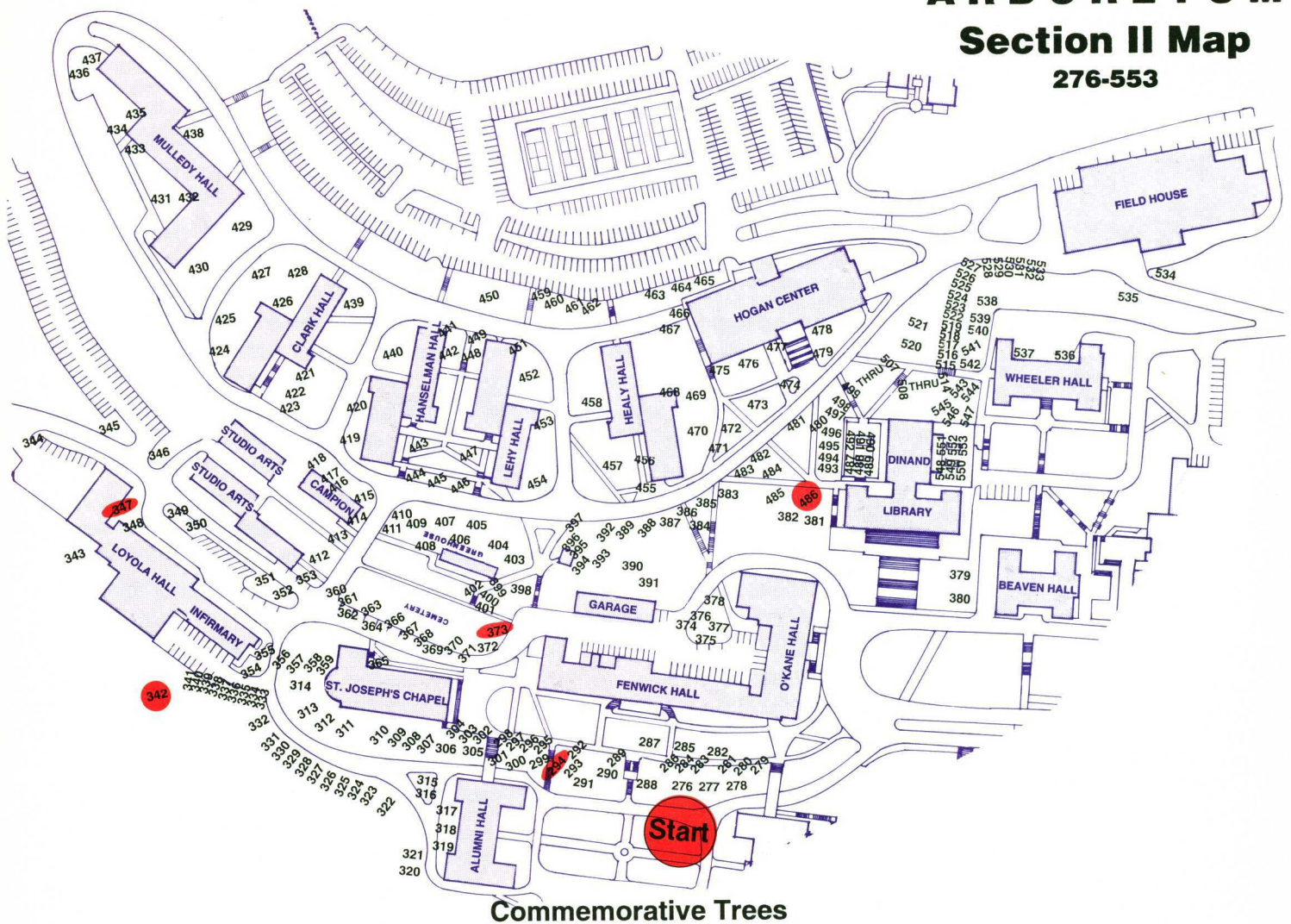
1. Removal and replacement of the dead or dying trees.
2. Removal of the center sidewalk for the entire length of the Lane, creating an improved root environment.
3. Grinding down of the tree stumps.
4. Moving street lights to center of strip (providing a better landscape lighting effect).
5. Installation of granite curbing.
6. Planting of 22 Skyline Locusts — 2½" to 3" caliper.
7. Installation of a Sprinkler System the entire length of the Lane.
8. Sodding of the entire median strip.
9. Limited and careful use of de-icing salt.
10. Injection of trees with gypsum to counteract any possible salt damage.
11. Plowing of snow from the center lane out.

In this day of man-made environmental hazards, I believe it is essential to maintain an environmental awareness to control the use of materials such as de-icing salt and follow landscaping procedures that will allow us to benefit from modern technology without harming nature.

This entire project — with the exception of the granite curbing and tree removal — was accomplished by the College of the Holy Cross Physical Plant.



College of the Holy Cross
ARBORETUM
Section II Map
276-553



Commemorative Trees

Tree
Number

Description

**See
Text**

Location: Dormitories — Mulledy, Clark, Hanselman, Lehy, Healy

In 1972 Holy Cross students allocated funds to plant several trees and shrubs around the upper hill dormitories to curb the football and other activities that were destroying lawn areas. Below are the numbers of the trees that were planted by the grounds department with the help of student volunteers.

419 — 420 — 421 — 422 — 423 — 424 — 425 — 427
 428 — 429 — 430 — 437 — 439 — 441 — 442 — 444
 445 — 446 — 447 — 448 — 449 — 452 — 453 — 454
 457 — 458 — 466 — 468 — 469 — 470

Tree
Number

Description

342 **Shanahan Tree**

Flowering Crabapple (*Malus floribunda*)

Location: North slope, Loyola Hall

Dedicated in 1964 in memory of Fr. Thomas Shanahan, S.J. who was a recipient of the Bronze Star Medal and Chaplain to Gen. Douglas McArthur during World War II.

347 **Quinsigamond Community College Tree**

*Honey Locust (*Gleditsia triacanthos inermis*)

Location: South side of Loyola.

Dedicated on October 14, 1965. Planted by QCC faculty and students to show their appreciation to Holy Cross. *original Birch tree was replaced with a Honey Locust in 1982.

373 **The Freedom Tree**

Weeping Cherry (*Prunus subhirtella "Pendula"*)

Dedicated to Capt. Richard Morin and all P.O.W.s and M.I.A.s. 1973.

486 **John O'Keefe Tree**

Sweetgum (*Liquidambar styraciflua*)

Dedicated in memory of John O'Keefe, class of 1951 and Vice President of Business Affairs and Treasurer, College of the Holy Cross.

294 **Professor Roffman Tree**

Flowering Crabapple (*Malus floribunda*)

Location: Center of North slope in Quadrangle closer towards Alumni Building.

Planted by the Math Department of the College of the Holy Cross in honor of Professor Berton Roffman.

COLLEGE OF THE HOLY CROSS - ARBORETUM (Section II 276-553)

BOTANICAL NAME	COMMON NAME	BOTANICAL NAME	COMMON NAME
276 <i>Tilia cordata</i>	Small Leaved European Linden	347 <i>Gleditsia triacanthos inermis</i>	Honey Locust
277 <i>Fraxinus americana</i>	White Ash	348 <i>Prunus Sargentii</i>	Sargents Cherry
278 <i>Tilia americana</i>	American Linden	349 <i>Gleditsia triacanthos inermis</i>	Honey Locust
279 <i>Acer platanoides</i>	Norway Maple	350 <i>Gleditsia triacanthos inermis</i>	Honey Locust
280 <i>Acer platanoides</i>	Norway Maple	351 <i>Gleditsia triacanthos inermis</i>	Honey Locust
281 <i>Acer platanoides</i>	Norway Maple	352 <i>Gleditsia triacanthos inermis</i>	Honey Locust
282 <i>Aesculus Hippocastanum</i>	Horse Chestnut	353 <i>Acer campestre</i>	Hedge Maple
283 <i>Acer platanoides</i>	Norway Maple	354 <i>Betula pendula</i>	European White Birch
284 <i>Acer platanoides</i>	Norway Maple	355 <i>Gleditsia triacanthos inermis</i>	Honey Locust
285 <i>Tilia cordata</i>	Small Leaved European Linden	356 <i>Fraxinus americana</i>	White Ash
286 <i>Acer platanoides</i>	Norway Maple	357 <i>Fraxinus americana</i>	White Ash
287 <i>Gleditsia triacanthos inermis</i>	Honey Locust	358 <i>Acer saccharum</i>	Sugar Maple
288 <i>Cornus Kousa</i>	Kousa Dogwood	359 <i>Acer saccharum</i>	Sugar Maple
289 <i>Acer platanoides</i>	Norway Maple	360 <i>Prunus serrulata</i>	Flowering Cherry
290 <i>Acer platanoides</i>	Norway Maple	361 <i>Prunus serrulata 'Kwanzan'</i>	Kwanzan Cherry
291 <i>Cornus Kousa</i>	Kousa Dogwood	362 <i>Fraxinus americana</i>	White Ash
292 <i>Acer platanoides</i>	Norway Maple	363 <i>Prunus serrulata 'Kwanzan'</i>	Kwanzan Cherry
293 <i>Tilia cordata</i>	Small Leaved European Linden	364 <i>Tilia cordata</i>	Small Leaved European Linden
294 <i>Malus floribunda</i>	Flowering Crabapple	365 <i>Cornus Kousa 'Variegata'</i>	Variegated Kousa Dogwood
295 <i>Pseudotsuga Menziesii</i>	Douglas Fir	366 <i>Prunus serrulata 'Kwanzan'</i>	Kwanzan Cherry
296 <i>Picea Abies</i>	Norway Spruce	367 <i>Prunus serrulata 'Kwanzan'</i>	Kwanzan Cherry
297 <i>Picea Abies</i>	Norway Spruce	368 <i>Fraxinus americana</i>	White Ash
298 <i>Abies concolor</i>	White Fir	369 <i>Prunus serrulata 'Kwanzan'</i>	Kwanzan Cherry
299 <i>Tilia cordata</i>	Small Leaved European Linden	370 <i>Prunus serrulata 'Kwanzan'</i>	Kwanzan Cherry
300 <i>Tilia cordata</i>	Small Leaved European Linden	371 <i>Prunus serrulata 'Kwanzan'</i>	Kwanzan Cherry
301 <i>Tilia cordata</i>	Small Leaved European Linden	372 <i>Prunus serrulata 'Kwanzan'</i>	Kwanzan Cherry
302 <i>Pseudotsuga Menziesii</i>	Douglas Fir	373 <i>Prunus subhirtella 'Pendula'</i>	Weeping Cherry
303 <i>Pseudotsuga Menziesii</i>	Douglas Fir	374 <i>Acer platanoides</i>	Norway Maple
304 <i>Pseudotsuga Menziesii</i>	Douglas Fir	375 <i>Malus floribunda</i>	Flowering Crabapple
305 <i>Tilia cordata</i>	Small Leaved European Linden	376 <i>Albizia Julibrissin</i>	Mimosa Tree
306 <i>Tilia cordata</i>	Small Leaved European Linden	377 <i>Acer platanoides</i>	Norway Maple
307 <i>Tilia cordata</i>	Small Leaved European Linden	378 <i>Acer platanoides</i>	Norway Maple
308 <i>Tilia cordata</i>	Small Leaved European Linden	379 <i>Sorbus Aucuparia</i>	European Mountain Ash
309 <i>Tilia cordata</i>	Small Leaved European Linden	380 <i>Tilia cordata</i>	Small Leaved European Linden
310 <i>Tilia cordata</i>	Small Leaved European Linden	381 <i>Picea pungens</i>	Colorado Blue Spruce
311 <i>Tilia cordata</i>	Small Leaved European Linden	382 <i>Larix laricina</i>	American Larch
312 <i>Tilia cordata</i>	Small Leaved European Linden	383 <i>Fraxinus americana</i>	White Ash
313 <i>Tilia cordata</i>	Small Leaved European Linden	384 <i>Pinus strobus</i>	White Pine
314 <i>Tilia cordata</i>	Small Leaved European Linden	385 <i>Pinus strobus</i>	White Pine
315 <i>Acer platanoides</i>	Norway Maple	386 <i>Tilia cordata</i>	Small Leaved European Linden
316 <i>Acer platanoides</i>	Norway Maple	387 <i>Tilia cordata</i>	Small Leaved European Linden
317 <i>Cornus Kousa</i>	Kousa Dogwood	388 <i>Pinus strobus</i>	White Pine
318 <i>Cornus Kousa</i>	Kousa Dogwood	389 <i>Acer platanoides</i>	Norway Maple
319 <i>Cornus Kousa</i>	Kousa Dogwood	390 <i>Acer platanoides</i>	Norway Maple
320 <i>Acer platanoides</i>	Norway Maple	391 <i>Syringa reticulata</i>	Japanese Tree Lilac
321 <i>Acer platanoides</i>	Norway Maple	392 <i>Paulownia tomentosa</i>	Princess Tree
322 <i>Acer platanoides</i>	Norway Maple	393 <i>Ailanthus altissima</i>	Tree of Heaven
323 <i>Magnolia acuminata</i>	Cucumber Magnolia	394 <i>Acer platanoides</i>	Norway Maple
324 <i>Picea Abies</i>	Norway Spruce	395 <i>Magnolia acuminata</i>	Cucumber Magnolia
325 <i>Magnolia acuminata</i>	Cucumber Magnolia	396 <i>Ailanthus altissima</i>	Tree of Heaven
326 <i>Quercus rubra</i>	Red Oak	397 <i>Euonymus europaea</i>	European Spindle Tree
327 <i>Magnolia acuminata</i>	Cucumber Magnolia	398 <i>Paulownia tomentosa</i>	Princess Tree
328 <i>Tilia cordata</i>	Small Leaved European Linden	399 <i>Picea Abies</i>	Norway Spruce
329 <i>Magnolia acuminata</i>	Cucumber Magnolia	400 <i>Picea Abies</i>	Norway Spruce
330 <i>Magnolia acuminata</i>	Cucumber Magnolia	401 <i>Pinus strobus</i>	White Pine
331 <i>Acer platanoides</i>	Norway Maple	402 <i>Pinus resinosa</i>	Red Pine
332 <i>Fraxinus americana</i>	White Ash	403 <i>Malus floribunda</i>	Flowering Crabapple
333 <i>Picea pungens</i>	Colorado Blue Spruce	404 <i>Morus alba 'Pendula'</i>	Weeping Mulberry
334 <i>Picea pungens</i>	Colorado Blue Spruce	405 <i>Malus floribunda</i>	Flowering Crabapple
335 <i>Picea pungens</i>	Colorado Blue Spruce	406 <i>Malus floribunda</i>	Flowering Crabapple
336 <i>Picea pungens</i>	Colorado Blue Spruce	407 <i>Malus floribunda</i>	Flowering Crabapple
337 <i>Picea pungens</i>	Colorado Blue Spruce	408 <i>Malus floribunda</i>	Flowering Crabapple
338 <i>Picea pungens</i>	Colorado Blue Spruce	409 <i>Malus floribunda</i>	Flowering Crabapple
339 <i>Picea pungens</i>	Colorado Blue Spruce	410 <i>Malus floribunda</i>	Flowering Crabapple
340 <i>Picea pungens</i>	Colorado Blue Spruce	411 <i>Malus floribunda</i>	Flowering Crabapple
341 <i>Picea pungens</i>	Colorado Blue Spruce	412 <i>Acer palmatum</i>	Japanese Maple
342 <i>Malus floribunda</i>	Flowering Crabapple	413 <i>Malus floribunda</i>	Flowering Crabapple
343 <i>Pyrus Calleryana</i>	Bradford Pear	414 <i>Malus floribunda</i>	Flowering Crabapple
344 <i>Acer palmatum</i>	Japanese Maple	415 <i>Quercus rubra</i>	Red Oak
345 <i>Pinus strobus</i>	White Pine	416 <i>Quercus rubra</i>	Red Oak
346 <i>Fraxinus americana</i>	White Ash	417 <i>Quercus rubra</i>	Red Oak

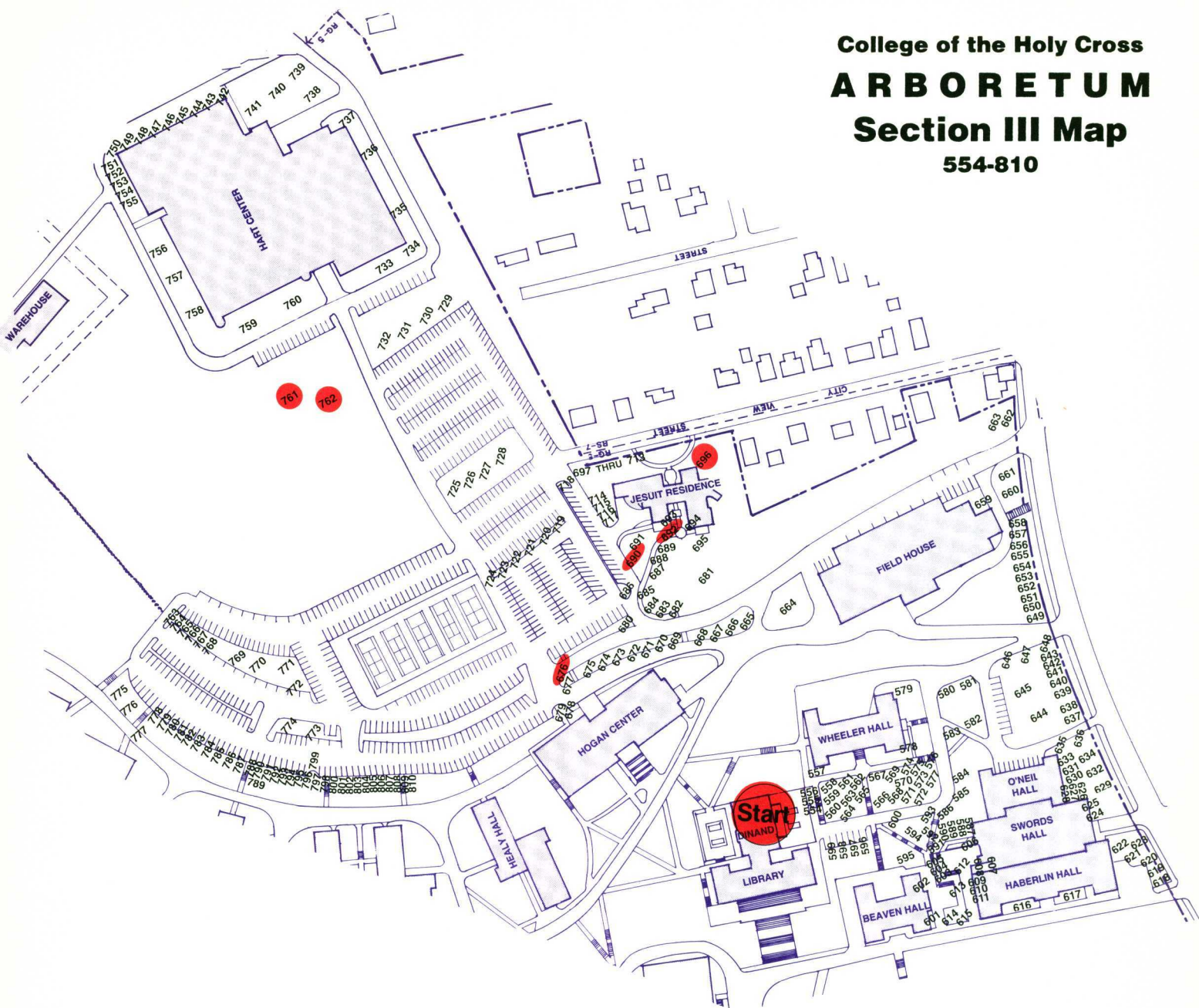
BOTANICAL NAME	COMMON NAME	BOTANICAL NAME	COMMON NAME
418 <i>Fraxinus americana</i>	White Ash	486 <i>Liquidambar styraciflua</i>	Sweet Gum
419 <i>Fagus grandifolia</i>	American Beech	487 <i>Cornus Kousa</i>	Kousa Dogwood
420 <i>Fagus grandifolia</i>	American Beech	488 <i>Cornus Kousa</i>	Kousa Dogwood
421 <i>Prunus serrulata</i>	Flowering Cherry	489 <i>Cornus Kousa</i>	Kousa Dogwood
422 <i>Fagus sylvatica 'Atropunicea'</i>	European Purple Birch	490 <i>Cornus Kousa</i>	Kousa Dogwood
423 <i>Gleditsia triacanthos inermis</i>	Honey Locust	491 <i>Cornus Kousa</i>	Kousa Dogwood
424 <i>Amelanchier canadensis</i>	Serviceberry	492 <i>Cornus florida</i>	Flowering Dogwood
425 <i>Amelanchier canadensis</i>	Serviceberry	493 <i>Picea Abies</i>	Norway Spruce
426 <i>Malus floribunda</i>	Flowering Crabapple	494 <i>Picea pungens</i>	Colorado Blue Spruce
427 <i>Amelanchier canadensis</i>	Serviceberry	495 <i>Picea pungens</i>	Colorado Blue Spruce
428 <i>Ulmus americana</i>	American Elm	496 <i>Picea Abies</i>	Norway Spruce
429 <i>Crataegus Phaenopyrum</i>	Washington Hawthorn	497 <i>Picea Abies</i>	Norway Spruce
430 <i>Fagus sylvatica 'Atropunicea'</i>	European Purple Beech	498 <i>Picea pungens</i>	Colorado Blue Spruce
431 <i>Acer Ginnala</i>	Amur Maple	499 <i>Picea pungens</i>	Colorado Blue Spruce
432 <i>Acer palmatum</i>	Japanese Maple	500 <i>Picea Abies</i>	Norway Spruce
433 <i>Cornus florida</i>	Flowering Dogwood	501 <i>Picea Abies</i>	Norway Spruce
434 <i>Cornus Kousa</i>	Kousa Dogwood	502 <i>Picea Abies</i>	Norway Spruce
435 <i>Cornus florida</i>	Flowering Dogwood	503 <i>Picea pungens</i>	Colorado Blue Spruce
436 <i>Cornus Kousa</i>	Kousa Dogwood	504 <i>Picea pungens</i>	Colorado Blue Spruce
437 <i>Laburnum X Watereri</i>	Golden Chain Tree	505 <i>Picea pungens</i>	Colorado Blue Spruce
438 <i>Gleditsia triacanthos inermis</i>	Honey Locust	506 <i>Picea pungens</i>	Colorado Blue Spruce
439 <i>Prunus serrulata</i>	Flowering Cherry	507 <i>Picea pungens</i>	Colorado Blue Spruce
440 <i>Gleditsia triacanthos inermis</i>	Honey Locust	508 <i>Picea pungens</i>	Colorado Blue Spruce
441 <i>Magnolia X Soulangiana</i>	Saucer Magnolia	509 <i>Picea pungens</i>	Colorado Blue Spruce
442 <i>Prunus serrulata</i>	Flowering Cherry	510 <i>Picea pungens</i>	Colorado Blue Spruce
443 <i>Acer palmatum</i>	Japaneses Maple	511 <i>Picea pungens</i>	Colorado Blue Spruce
444 <i>Malus floribunda</i>	Flowering Crabapple	512 <i>Picea pungens</i>	Colorado Blue Spruce
445 <i>Malus floribunda</i>	Flowering Crabapple	513 <i>Picea pungens</i>	Colorado Blue Spruce
446 <i>Malus floribunda</i>	Flowering Crabapple	514 <i>Picea pungens</i>	Colorado Blue Spruce
447 <i>Magnolia stellata</i>	Star Magnolia	515 <i>Picea Abies</i>	Norway Spruce
448 <i>Prunus serrulata</i>	Flowering Cherry	516 <i>Picea Abies</i>	Norway Spruce
449 <i>Magnolia X Soulangiana</i>	Saucer Magnolia	517 <i>Picea Abies</i>	Norway Spruce
450 <i>Magnolia virginiana</i>	Sweet Bay Magnolia	518 <i>Picea Abies</i>	Norway Spruce
451 <i>Acer palmatum</i>	Japanese Maple	519 <i>Picea Abies</i>	Norway Spruce
452 <i>Malus floribunda</i>	Flowering Crabapple	520 <i>Platanus x acerifolia</i>	London Plane
453 <i>Malus floribunda</i>	Flowering Crabapple	521 <i>Evodia Danielli</i>	Evodia Tree
454 <i>Cercidiphyllum japonicum</i>	Katsura Tree	522 <i>Abies balsamea</i>	Balsam Fir
455 <i>Acer platanoides</i>	Crimson King Maple	523 <i>Picea pungens</i>	Colorado Blue Spruce
'Schwedleri Nigrum'		524 <i>Picea Abies</i>	Norway Spruce
456 <i>Magnolia stellata</i>	Star Magnolia	525 <i>Picea Abies</i>	Norway Spruce
457 <i>Fagus sylvatica 'Atropunicea'</i>	European Purple Beech	526 <i>Picea Abies</i>	Norway Spruce
458 <i>Crataegus Phaenopyrum</i>	Washington Hawthorn	527 <i>Abies concolor</i>	White Fir
459 <i>Aesculus Hippocastanum</i>	Horse Chestnut	528 <i>Abies concolor</i>	White Fir
460 <i>Aesculus Hippocastanum</i>	Horse Chestnut	529 <i>Picea Abies</i>	Norway Spruce
461 <i>Aesculus Hippocastanum</i>	Horse Chestnut	530 <i>Picea Abies</i>	Norway Spruce
462 <i>Aesculus Hippocastanum</i>	Horse Chestnut	531 <i>Picea Abies</i>	Norway Spruce
463 <i>Acer saccharum</i>	Sugar Maple	532 <i>Picea Abies</i>	Norway Spruce
464 <i>Aesculus Hippocastanum</i>	Horse Chestnut	533 <i>Picea Abies</i>	Norway Spruce
465 <i>Aesculus Hippocastanum</i>	Horse Chestnut	534 <i>Ulmus americana</i>	American Elm
466 <i>Betula papyrifera</i>	Paper Birch	535 <i>Ulmus americana</i>	American Elm
467 <i>Magnolia X Soulangiana</i>	Saucer Magnolia	536 <i>Malus floribunda</i>	Flowering Crabapple
468 <i>Amelanchier canadensis</i>	Serviceberry	537 <i>Malus floribunda</i>	Flowering Crabapple
469 <i>Liquidambar styraciflua</i>	Sweet Gum	538 <i>Tilia cordata</i>	Small Leaved European Linden
470 <i>Ulmus americana</i>	American Elm	539 <i>Pinus nigra</i>	Austrian Pine
471 <i>Malus floribunda</i>	Flowering Crabapple	540 <i>Betula papyrifera</i>	Paper Birch
472 <i>Malus floribunda</i>	Flowering Crabapple	541 <i>Betula papyrifera</i>	Paper Birch
473 <i>Malus floribunda</i>	Flowering Crabapple	542 <i>Picea pungens</i>	Colorado Blue Spruce
474 <i>Malus floribunda</i>	Flowering Crabapple	543 <i>Betula papyrifera</i>	Paper Birch
475 <i>Cornus Kousa</i>	Kousa Dogwood	544 <i>Pinus nigra</i>	Austrian Pine
476 <i>Pinus Mugo</i>	Swiss Mountain Pine	545 <i>Betula papyrifera</i>	Paper Birch
477 <i>Malus floribunda</i>	Flowering Crabapple	546 <i>Pinus nigra</i>	Austrian Pine
478 <i>Cornus Kousa</i>	Kousa Dogwood	547 <i>Pinus nigra</i>	Austrian Pine
479 <i>Betula pendula</i>	European White Birch	548 <i>Cornus florida</i>	Flowering Dogwood
480 <i>Cornus Kousa</i>	Kousa Dogwood	549 <i>Cornus florida</i>	Flowering Dogwood
481 <i>Aesculus Hippocastanum</i>	Horse Chestnut	550 <i>Cornus florida</i>	Flowering Dogwood
482 <i>Aesculus Hippocastanum</i>	Horse Chestnut	551 <i>Cornus florida</i>	Flowering Dogwood
483 <i>Malus pumila</i>	Common Apple	552 <i>Cornus florida</i>	Flowering Dogwood
484 <i>Acer saccharum</i>	Sugar Maple	553 <i>Cornus florida</i>	Flowering Dogwood
485 <i>Acer saccharum</i>	Sugar Maple		

COLLEGE OF THE HOLY CROSS - ARBORETUM

TREE SPECIES

LATIN	COMMON	ORIGIN
1 <i>Abies balsamea</i>	Balsam Fir	Northern Temperate Zone
2 <i>Abies concolor</i>	White Fir	Northern Temperate Zone
3 <i>Abies fraseri</i>	Fraser Fir	North America
4 <i>Acer campestre</i>	Hedge Maple	Europe & W. Asia
5 <i>Acer Ginnala</i>	Amur Maple	China
6 <i>Acer palmatum</i>	Japanese Maple	Japan - Korea
7 <i>Acer platanoides</i>	Norway Maple	Europe
8 <i>Acer platanoides</i> 'Schwedleri'	Schwedler Maple	Europe
9 <i>Acer platanoides</i> cv. <i>Schwedleri</i> Nigrum	Crimson King Maple	Northern Temperate Regions
10 <i>Acer rubrum</i>	Red Maple	Northern Temperate Zone
11 <i>Acer saccharum</i>	Sugar Maple	Northern Temperate Zone
12 <i>Aesculus Hippocastanum</i>	Horse Chestnut	E. Europe & W. Asia & North America
13 <i>Ailanthus altissima</i>	Tree of Heaven	China
14 <i>Albizia julibrissin</i>	Mimosa Tree	Persia & China
15 <i>Amelanchier canadensis</i>	Serviceberry	N. America Temperate Zone
16 <i>Betula papyrifera</i>	Paper Birch	North America
17 <i>Betula pendula</i>	European White Birch	Europe
18 <i>Betula pyramidalis</i>	White Birch	Europe
19 <i>Betula pendula</i> cv. <i>Youngii</i>	Youngs Weeping Birch	Europe
20 <i>Cercidiphyllum japonicum</i>	Katsura Tree	Asia
21 <i>Cornus florida</i>	Flowering Dogwood	North America
22 <i>Cornus Kousa</i>	Kousa Dogwood	Asia
23 <i>Cornus Kousa</i> 'Variegata'	Variegated Kousa Dogwood	China
24 <i>Crataegus Phaenopyrum</i>	Hawthorne	North America
25 <i>Euonymus europaeus</i>	European Spindle Tree	Eurasia
26 <i>Evodia Danielli</i>	Evodia	China - Korea
27 <i>Fagus frandifolia</i>	American Beech	North America
28 <i>Fagus sylvatica</i> cv. <i>Atropunicea</i>	Purple European Beech	Europe
29 <i>Fraxinus americana</i>	White Ash	North America
30 <i>Ginkgo biloba</i>	Ginkgo	China
31 <i>Gleditsia triacanthos inermis</i>	Honey Locust	North America
32 <i>Laburnum X Watereri</i>	Golden Train	Europe
33 <i>Larix laricina</i>	American Larch	Northern Hemisphere (colder areas)
34 <i>Liquidambar styraciflua</i>	Sweetgum	North America
35 <i>Magnolia acuminata</i>	Cucumber Magnolia	North America, Asia, Central America
36 <i>Magnolia stellata</i>	Star Magnolia	Japan
37 <i>Magnolia virginiana</i>	Sweetbay Magnolia	North America, Asia, Central America
38 <i>Magnolia x Soulangiana</i>	Saucer Magnolia	China
39 <i>Malus floribunda</i>	Flowering Crabapple	Japan
40 <i>Malus pumila</i>	Common Apple	Europe
41 <i>Morus alba</i> cv. <i>Pendula</i>	Weeping Mulberry	China
42 <i>Paulownia tomentosa</i>	Empress Tree	China
43 <i>Picea Abies</i>	Norway Spruce	Northern Hemisphere
44 <i>Picea glauca</i>	White Spruce	North America
45 <i>Picea pungens</i>	Colorado Blue Spruce	Northern Hemisphere
46 <i>Pinus Mugo</i>	Swiss Mountain Pine	Europe
47 <i>Pinus nigra</i>	Austrian Pine	Northern Hemisphere
48 <i>Pinus resinosa</i>	Red Pine	Northern Hemisphere
49 <i>Pinus strobus</i>	White Pine	Northern Hemisphere
50 <i>Pinus sylvestris</i>	Scotch Pine	Eastern Northern Hemisphere
51 <i>Platanus x acerifolia</i>	London Plane	wide distribution
52 <i>Prunus cerasifera</i> cv. 'Atropurpurea'	Pissard Plum	Asia to Balkans
53 <i>Prunus Sargentii</i>	Sargents Cherry	Japan, Korea, Sakhalin
54 <i>Prunus serrulata</i>	Flowering Cherry	China
55 <i>Prunus serrulata</i> cv. 'Kwanzan'	Kwanzan Cherry	Japan
56 <i>Prunus subhirtella</i> cv. 'Pendula'	Weeping Cherry	Japan
57 <i>Prunus virginiana</i>	Chokecherry	Northern Hemisphere
58 <i>Pseudotsuga Menziesii</i>	Douglas Fir	North America, E. Asia
59 <i>Pyrus Calleryana</i> cv. <i>Bradford</i>	Bradford Pear	China
60 <i>Quercus coccinea</i>	Scarlet Oak	North America
61 <i>Quercus palustris</i>	Pin Oak	North America
62 <i>Quercus rubra</i>	Red Oak	North America
63 <i>Quercus velutina</i>	Black Oak	North America
64 <i>Salix babylonica</i>	Weeping Willow	China
65 <i>Sciadopitys verticillata</i>	Japanese Umbrella Pine	Japan
66 <i>Sorbus Aucuparia</i>	European Mountain Ash	Europe, Asia Minor
67 <i>Syringa reticulata</i>	Japanese Tree Lilac	Japan
68 <i>Taxus cuspidata</i>	Japanase Yew	Japan
69 <i>Tilia americana</i>	American Linden	Northern Hemisphere
70 <i>Tilia cordata</i>	Small Leaved European Linden	Europe
71 <i>Ulmus americana</i>	American Elm	N. Temperate Zone
72 <i>Ulmus glabra</i>	Scotch Elm	Europe
73 <i>Ulmus procera</i>	English Elm	Europe

College of the Holy Cross
ARBORETUM
Section III Map
554-810



Commemorative Trees

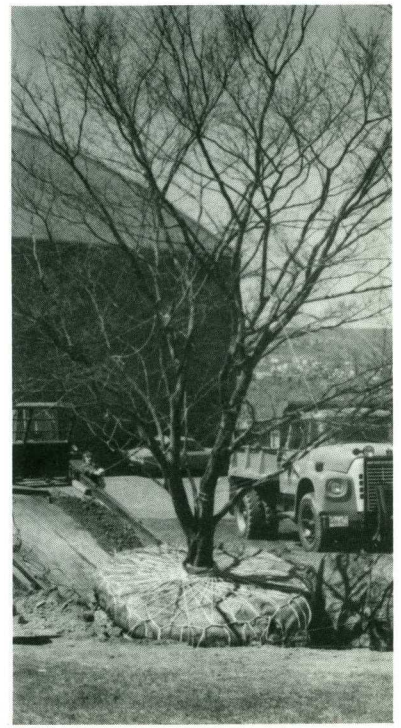
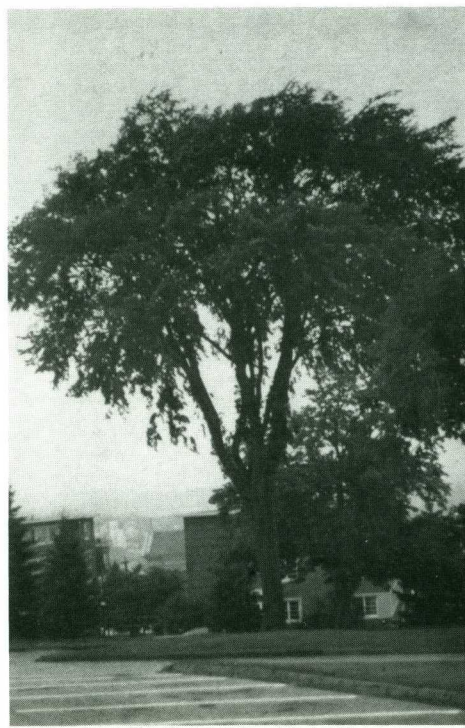
Tree Number	Description	Tree Number	Description
676	John V. Power Tree Japanese Yew (<i>Taxus cuspidata</i>) Location: South side of Hogan Campus Center on the upper part of the meridian. Dedicated on June 10, 1978. John V. Power, U.S.M.C. was a Holy Cross student prior to the war. He was awarded the Medal of Honor for his bravery in World War II.	696	John C. Lamson Tree Flowering Crabapple (<i>Malus floribunda</i>) Location: Southwest corner of Ciampi Residence. Dedicated in memory of John C. Lamson.
690	Fr. Ambrose J. Mahoney, S.J. Tree White Pine (<i>Pinus strobus</i>) Location: Northeast side of Ciampi Residence. Dedicated in memory of Fr. Ambrose J. Mahoney, S.J.	761	Mike W. Doyle Tree Norway Maple (<i>Acer platanoides</i>) Location: Lawn area in front of Hart Center. Dedicated in honor of Mike W. Doyle, Class of 1964. Missing in action, South Vietnam, 8/12/67.
692	Class of 1946 Tree Small Leaved European Linden (<i>Tilia cordata</i>) Location: North side of Ciampi Residence. Dedicated in 1991 by the Class of 1946.	762	Richard R. Kane Tree Honey Locust (<i>Gleditsia triacanthos inermis</i>) Location: Lawn area in front of Hart Center. Dedicated in honor of Richard R. Kane, Class of 1964. Missing in action, South Vietnam, 8/12/67.

COLLEGE OF THE HOLY CROSS ARBORETUM (Section III 554 - 810)

BOTANICAL NAME	COMMON NAME	BOTANICAL NAME	COMMON NAME
554 <i>Betula pendula</i>	European White Birch	624 <i>Malus floribunda</i>	Flowering Crabapple
555 <i>Betula pendula</i>	European White Birch	625 <i>Malus floribunda</i>	Flowering Crabapple
556 <i>Betula pendula</i>	European White Birch	626 <i>Pinus nigra</i>	Austrian Pine
557 <i>Malus floribunda</i>	Flowering Crabapple	627 <i>Pinus nigra</i>	Austrian Pine
558 <i>Betula pendula</i>	European White Birch	628 <i>Pinus nigra</i>	Austrian Pine
559 <i>Betula pendula</i>	European White Birch	629 <i>Gleditsia triacanthos inermis</i>	Honey Locust
560 <i>Betula pendula</i>	European White Birch	630 <i>Pinus nigra</i>	Austrian Pine
561 <i>Betula pendula</i>	European White Birch	631 <i>Pinus nigra</i>	Austrian Pine
562 <i>Betula pendula</i>	European White Birch	632 <i>Gleditsia triacanthos inermis</i>	Honey Locust
563 <i>Betula pendula</i>	European White Birch	633 <i>Pinus nigra</i>	Austrian Pine
564 <i>Betula pendula</i>	European White Birch	634 <i>Gleditsia triacanthos inermis</i>	Honey Locust
565 <i>Betula pendula</i>	European White Birch	635 <i>Pinus nigra</i>	Austrian Pine
566 <i>Betula pendula</i>	European White Birch	636 <i>Pinus nigra</i>	Austrian Pine
567 <i>Betula pendula</i>	European White Birch	637 <i>Gleditsia triacanthos inermis</i>	Honey Locust
568 <i>Betula pendula</i>	European White Birch	638 <i>Gleditsia triacanthos inermis</i>	Honey Locust
569 <i>Betula pendula</i>	European White Birch	639 <i>Gleditsia triacanthos inermis</i>	Honey Locust
570 <i>Betula pendula</i>	European White Birch	640 <i>Gleditsia triacanthos inermis</i>	Honey Locust
571 <i>Betula pendula</i>	European White Birch	641 <i>Gleditsia triacanthos inermis</i>	Honey Locust
572 <i>Betula pendula</i>	European White Birch	642 <i>Gleditsia triacanthos inermis</i>	Honey Locust
573 <i>Betula pendula</i>	European White Birch	643 <i>Gleditsia triacanthos inermis</i>	Honey Locust
574 <i>Betula pendula</i>	European White Birch	644 <i>Acer platanoides</i>	Norway Maple
575 <i>Betula pendula</i>	European White Birch	645 <i>Acer platanoides</i>	Norway Maple
576 <i>Betula pendula</i>	European White Birch	646 <i>Acer saccharum</i>	Sugar Maple
577 <i>Betula pendula</i>	European White Birch	647 <i>Acer saccharum</i>	Sugar Maple
578 <i>Malus floribunda</i>	Flowering Crabapple	648 <i>Acer saccharum</i>	Sugar Maple
579 <i>Prunus subhirtella 'Pendula'</i>	Weeping Cherry	649 <i>Gleditsia triacanthos inermis</i>	Honey Locust
580 <i>Acer platanoides</i>	Norway Maple	650 <i>Gleditsia triacanthos inermis</i>	Honey Locust
581 <i>Acer saccharum</i>	Sugar Maple	651 <i>Gleditsia triacanthos inermis</i>	Honey Locust
582 <i>Malus floribunda</i>	Flowering Crabapple	652 <i>Gleditsia triacanthos inermis</i>	Honey Locust
583 <i>Malus floribunda</i>	Flowering Crabapple	653 <i>Gleditsia triacanthos inermis</i>	Honey Locust
584 <i>Gleditsia triacanthos inermis</i>	Honey Locust	654 <i>Gleditsia triacanthos inermis</i>	Honey Locust
585 <i>Gleditsia triacanthos inermis</i>	Honey Locust	655 <i>Gleditsia triacanthos inermis</i>	Honey Locust
586 <i>Betula pendula</i>	European White Birch	656 <i>Gleditsia triacanthos inermis</i>	Honey Locust
587 <i>Betula pendula 'Youngii'</i>	Youngs Weeping Birch	657 <i>Gleditsia triacanthos inermis</i>	Honey Locust
588 <i>Betula pendula 'Youngii'</i>	Youngs Weeping Birch	658 <i>Gleditsia triacanthos inermis</i>	Honey Locust
589 <i>Betula pendula 'Youngii'</i>	Youngs Weeping Birch	659 <i>Cornus florida</i>	Flowering Dogwood
590 <i>Betula pendula 'Youngii'</i>	Youngs Weeping Birch	660 <i>Gleditsia triacanthos inermis</i>	Honey Locust
591 <i>Betula pendula 'Youngii'</i>	Youngs Weeping Birch	661 <i>Gleditsia triacanthos inermis</i>	Honey Locust
592 <i>Malus floribunda</i>	Flowering Crabapple	662 <i>Gleditsia triacanthos inermis</i>	Honey Locust
593 <i>Gleditsia triacanthos inermis</i>	Honey Locust	663 <i>Gleditsia triacanthos inermis</i>	Honey Locust
594 <i>Malus floribunda</i>	Flowering Crabapple	664 <i>Acer palmatum</i>	Japanese Red Maple
595 <i>Malus floribunda</i>	Flowering Crabapple	665 <i>Quercus rubra</i>	Red Oak
596 <i>Acer platanoides</i>	Norway Maple	666 <i>Quercus rubra</i>	Red Oak
597 <i>Acer platanoides</i>	Norway Maple	667 <i>Quercus palustris</i>	Pin Oak
598 <i>Acer platanoides</i>	Norway Maple	668 <i>Quercus rubra</i>	Red Oak
599 <i>Acer platanoides</i>	Norway Maple	669 <i>Quercus palustris</i>	Pin Oak
600 <i>Malus floribunda</i>	Flowering Crabapple	670 <i>Quercus rubra</i>	Red Oak
601 <i>Malus floribunda</i>	Flowering Crabapple	671 <i>Quercus rubra</i>	Red Oak
602 <i>Malus floribunda</i>	Flowering Crabapple	672 <i>Quercus palustris</i>	Pin Oak
603 <i>Tilia cordata</i>	Small Leaved European Linden	673 <i>Quercus coccinea</i>	Scarlet Oak
604 <i>Tilia cordata</i>	Small Leaved European Linden	674 <i>Quercus palustris</i>	Pin Oak
605 <i>Tilia cordata</i>	Small Leaved European Linden	675 <i>Quercus coccinea</i>	Scarlet Oak
606 <i>Prunus serrulata 'Kwanzan'</i>	Kwanzan Cherry	676 <i>Taxus cuspidata</i>	Japanese Yew
607 <i>Pyrus Calleryana</i>	Bradford Pear	677 <i>Acer palmatum</i>	Japanese Red Maple
608 <i>Pyrus Calleryana</i>	Bradford Pear	678 <i>Pinus Mugo</i>	Swiss Mountain Pine
609 <i>Pyrus Calleryana</i>	Bradford Pear	679 <i>Sciadopitys verticillata</i>	Japanese Umbrella Pine
610 <i>Pyrus Calleryana</i>	Bradford Pear	680 <i>Acer saccharum</i>	Sugar Maple
611 <i>Pyrus Calleryana</i>	Bradford Pear	681 <i>Acer saccharum</i>	Sugar Maple
612 <i>Picea pungens</i>	Colorado Blue Spruce	682 <i>Malus floribunda</i>	Flowering Crabapple
613 <i>Gleditsia triacanthos inermis</i>	Honey Locust	683 <i>Malus floribunda</i>	Flowering Crabapple
614 <i>Gleditsia triacanthos inermis</i>	Honey Locust	684 <i>Malus floribunda</i>	Flowering Crabapple
615 <i>Gleditsia triacanthos inermis</i>	Honey Locust	685 <i>Malus floribunda</i>	Flowering Crabapple
616 <i>Acer rubrum</i>	Red Maple	686 <i>Malus floribunda</i>	Flowering Crabapple
617 <i>Acer rubrum</i>	Red Maple	687 <i>Malus floribunda</i>	Flowering Crabapple
618 <i>Pinus nigra</i>	Austrian Pine	688 <i>Malus floribunda</i>	Flowering Crabapple
619 <i>Pinus nigra</i>	Austrian Pine	689 <i>Malus floribunda</i>	Flowering Crabapple
620 <i>Pinus nigra</i>	Austrian Pine	690 <i>Pinus strobus</i>	White Pine
621 <i>Pinus nigra</i>	Austrian Pine	691 <i>Acer platanoides</i>	Norway Maple
622 <i>Pinus nigra</i>	Austrian Pine	692 <i>Tilia cordata</i>	Small Leaved European Linden
623 <i>Pinus nigra</i>	Austrian Pine	693 <i>Betula pendula</i>	European White Birch

BOTANICAL NAME	COMMON NAME
694 <i>Betula pendula</i>	European White Birch
695 <i>Acer palmatum</i>	Japanese Red Maple
696 <i>Malus floribunda</i>	Flowering Crabapple
697 <i>Pinus nigra</i>	Austrian Pine
698 <i>Pinus nigra</i>	Austrian Pine
699 <i>Pinus nigra</i>	Austrian Pine
700 <i>Pinus nigra</i>	Austrian Pine
701 <i>Pinus nigra</i>	Austrian Pine
702 <i>Pinus nigra</i>	Austrian Pine
703 <i>Pinus nigra</i>	Austrian Pine
704 <i>Pinus nigra</i>	Austrian Pine
705 <i>Pinus nigra</i>	Austrian Pine
706 <i>Pinus nigra</i>	Austrian Pine
707 <i>Pinus nigra</i>	Austrian Pine
708 <i>Acer platanoides</i> 'Schwedleri Nigrum'	Crimson King Maple
709 <i>Acer platanoides</i>	Norway Maple
710 <i>Pinus nigra</i>	Austrian Pine
711 <i>Pinus nigra</i>	Austrian Pine
712 <i>Pinus nigra</i>	Austrian Pine
713 <i>Pinus nigra</i>	Austrian Pine
714 <i>Pinus nigra</i>	Austrian Pine
715 <i>Pinus nigra</i>	Austrian Pine
716 <i>Pinus nigra</i>	Austrian Pine
717 <i>Betula pendula</i>	European White Birch
718 <i>Malus floribunda</i>	Flowering Crabapple
719 <i>Malus floribunda</i>	Flowering Crabapple
720 <i>Malus floribunda</i>	Flowering Crabapple
721 <i>Malus floribunda</i>	Flowering Crabapple
722 <i>Malus floribunda</i>	Flowering Crabapple
723 <i>Malus floribunda</i>	Flowering Crabapple
724 <i>Malus floribunda</i>	Flowering Crabapple
725 <i>Gleditsia triacanthos inermis</i>	Honey Locust
726 <i>Gleditsia triacanthos inermis</i>	Honey Locust
727 <i>Gleditsia triacanthos inermis</i>	Honey Locust
728 <i>Gleditsia triacanthos inermis</i>	Honey Locust
729 <i>Acer platanoides</i>	Norway Maple
730 <i>Acer saccharum</i>	Sugar Maple
731 <i>Acer platanoides</i>	Norway Maple
732 <i>Acer platanoides</i>	Norway Maple
733 <i>Gleditsia triacanthos inermis</i>	Honey Locust
734 <i>Betula papyrifera</i>	White Birch
735 <i>Gleditsia triacanthos inermis</i>	Honey Locust
736 <i>Gleditsia triacanthos inermis</i>	Honey Locust
737 <i>Magnolia stellata</i>	Star Magnolia
738 <i>Pinus strobus</i>	White Pine
739 <i>Picea glauca</i>	White Spruce
740 <i>Gleditsia triacanthos inermis</i>	Honey Locust
741 <i>Picea glauca</i>	White Spruce
742 <i>Gleditsia triacanthos inermis</i>	Honey Locust
743 <i>Gleditsia triacanthos inermis</i>	Honey Locust
744 <i>Gleditsia triacanthos inermis</i>	Honey Locust
745 <i>Gleditsia triacanthos inermis</i>	Honey Locust
746 <i>Gleditsia triacanthos inermis</i>	Honey Locust
747 <i>Gleditsia triacanthos inermis</i>	Honey Locust
748 <i>Gleditsia triacanthos inermis</i>	Honey Locust
749 <i>Gleditsia triacanthos inermis</i>	Honey Locust
750 <i>Gleditsia triacanthos inermis</i>	Honey Locust
751 <i>Gleditsia triacanthos inermis</i>	Honey Locust
752 <i>Gleditsia triacanthos inermis</i>	Honey Locust
753 <i>Gleditsia triacanthos inermis</i>	Honey Locust
754 <i>Gleditsia triacanthos inermis</i>	Honey Locust
755 <i>Gleditsia triacanthos inermis</i>	Honey Locust
756 <i>Gleditsia triacanthos inermis</i>	Honey Locust
757 <i>Gleditsia triacanthos inermis</i>	Honey Locust
758 <i>Gleditsia triacanthos inermis</i>	Honey Locust
759 <i>Gleditsia triacanthos inermis</i>	Honey Locust
760 <i>Betula pendula</i>	European White Birch
761 <i>Acer platanoides</i>	Norway Maple
762 <i>Gleditsia triacanthos inermis</i>	Honey Locust

BOTANICAL NAME	COMMON NAME
763 <i>Picea glauca</i>	White Spruce
764 <i>Picea glauca</i>	White Spruce
765 <i>Picea glauca</i>	White Spruce
766 <i>Picea rubens</i>	Red Spruce
767 <i>Picea glauca</i>	White Spruce
768 <i>Picea Abies</i>	Norway Spruce
769 <i>Prunus cerasifera</i> 'Atropurpurea'	Pissard Plum
770 <i>Sorbus Aucuparia</i>	European Mountain Ash
771 <i>Prunus cerasifera</i> 'Atropurpurea'	Pissard Plum
772 <i>Prunus cerasifera</i> 'Atropurpurea'	Pissard Plum
773 <i>Ulmus americana</i>	American Elm
774 <i>Ulmus americana</i>	American Elm
775 <i>Pseudotsuga Menziesii</i>	Douglas Fir
776 <i>Pseudotsuga Menziesii</i>	Douglas Fir
777 <i>Pseudotsuga Menziesii</i>	Douglas Fir
778 <i>Pseudotsuga Menziesii</i>	Douglas Fir
779 <i>Pseudotsuga Menziesii</i>	Douglas Fir
780 <i>Picea rubens</i>	Red Spruce
781 <i>Pseudotsuga Menziesii</i>	Douglas Fir
782 <i>Picea rubens</i>	Red Spruce
783 <i>Pseudotsuga Menziesii</i>	Douglas Fir
784 <i>Picea glauca</i>	White Spruce
785 <i>Picea Abies</i>	Norway Spruce
786 <i>Picea pungens</i>	Colorado Blue Spruce
787 <i>Picea glauca</i>	White Spruce
788 <i>Picea pungens</i>	Colorado Blue Spruce
789 <i>Magnolia virginiana</i>	Sweet Bay Magnolia
790 <i>Picea glauca</i>	White Spruce
791 <i>Picea Abies</i>	Norway Spruce
792 <i>Picea glauca</i>	White Spruce
793 <i>Picea Abies</i>	Norway Spruce
794 <i>Picea Abies</i>	Norway Spruce
795 <i>Picea Abies</i>	Norway Spruce
796 <i>Picea rubens</i>	Red Spruce
797 <i>Picea pungens</i>	Colorado Blue Spruce
798 <i>Picea glauca</i>	White Spruce
799 <i>Aesculus Hippocastanum</i>	Horse Chestnut
800 <i>Picea glauca</i>	White Spruce
801 <i>Picea glauca</i>	White Spruce
802 <i>Picea glauca</i>	White Spruce
803 <i>Picea glauca</i>	White Spruce
804 <i>Picea glauca</i>	White Spruce
805 <i>Picea glauca</i>	White Spruce
806 <i>Picea glauca</i>	White Spruce
807 <i>Picea Abies</i>	Norway Spruce
808 <i>Picea glauca</i>	White Spruce
809 <i>Picea glauca</i>	White Spruce
810 <i>Picea glauca</i>	White Spruce



Special Thanks to:

Archives Department, College of the Holy Cross

Bartlett Tree Expert Company

Carl Cathcart, District Manager, Bartlett Tree Expert Company

Floss Genser, Grounds Manager, Haverford College, Haverford, PA 19041

Graphic Arts Department, College of the Holy Cross

Fr. Eugene J. Harrington, S.J.

Jeff Hehman, District Manager, Bartlett Tree Expert Company

Ms. Jeniffer Hicks, Arnold Arboretum, Jamaica Plain, MA

Joan Marie Jakubiak, '79

Patricia Kupcinkas, '83

George Query, Greenhouse Foreperson, College of the Holy Cross

Kevin Schoen, '81

Booklet Written by:

James D. Long, Superintendent of Grounds, College of the Holy Cross.

Cover photo: Joel R. Villa '65

A special collection of books and materials for tree study and research is available in the Dinand Library, College of the Holy Cross.

Checklist of United States Trees (Native and Naturalized) Elbert L. Little Jr., *Agriculture Handbook* No. 541, 375 pp., U.S. Department of Agriculture, 1979.

The Guide to Garden Shrubs and Trees, Norman Taylor, 422 pp., Bonanza Books, New York, 1965.

Hortus Third: A Concise Dictionary of Plants Cultivated in the United States and Canada, 1304 pp., illus., Cornell University, Macmillan Publishing Company, New York, 1976.

Tree Identification Book, George Symonds, Syracuse University, 1970 #58-5359.

Tree Maintenance, P.P. Pirone, 587 pp., Oxford University Press, New York, 1978.

Trees of North America, Frank C. Brookman, 280 pp., Golden Press, New York, 1968.

Trees, Jaromir Pokorny, 179 pp., Octopus Books Limited, London, 1974.

Trees, James Underwood Crockett, 160 pp., Time-Life Books, New York, 1972.

Trees, Shrubs and Vines, Arthur Vierter, #8156-0068-2.

First Edition funded by a grant from Stanley Smith Horticultural Trust of Dunbar, Scotland.

Second Edition published by the College of the Holy Cross., 1993



COLLEGE OF THE HOLY CROSS
WORCESTER, MASSACHUSETTS 01610